

## **Births: Preliminary Data for 2009**

by Brady E. Hamilton, Ph.D.; Joyce A. Martin, M.P.H.; and Stephanie J. Ventura, M.A.;  
Division of Vital Statistics

A reformatted, typeset version of this report will replace the current version.

## **Births: Preliminary Data for 2009**

Brady E. Hamilton, Ph.D.; Joyce A. Martin, M.P.H.; and Stephanie J. Ventura, M.A.;  
Division of Vital Statistics

### **Abstract**

*Objectives*—This report presents preliminary data for 2009 on births in the United States. U.S. data on births are shown by age, live-birth order, race, and Hispanic origin of mother. Data on marital status, cesarean delivery, preterm births, and low birthweight are also presented.

*Methods*—Data in this report are based on 99.95 percent of births for 2009. The records are weighted to independent control counts of all births received in state vital statistics offices in 2009. Comparisons are made with final 2008 data.

*Results*— The 2009 preliminary number of US births declined 3 percent from 2008, to 4,131,019; the 2009 general fertility rate (66.7 per 1,000 women) and the total fertility rate (2,007.5 births per 1,000) declined (3-4 percent). The number of births and rates declined for all race and Hispanic origin groups in 2009. • The birth rate for US teenagers 15-19 fell 6 percent to 39.1 per 1,000, a record low for the Nation. • Birth rates for younger and older teenagers and for Hispanic, non-Hispanic white, non-Hispanic black, and Asian or Pacific Islander teenagers all reached historic lows in 2009. • The birth rates for women in their early twenties fell (7 percent, the largest percentage decline for this age group since 1973) as did the rates for women in their late twenties and thirties; the birth rate for women in their early forties increased in 2009. • The birth rate for unmarried women declined almost 4 percent to 50.6 per 1,000 aged 15-44. The number of nonmarital births fell 2 percent to 1,693,850 in 2009, the first decline since 1996-1997. • The percentage of births to unmarried women, however, continued to increase in 2009. • The cesarean delivery rate rose to 32.9 percent in 2009, another record high. • The preterm birth rate declined for the third straight year to 12.18 percent of all births. • The low birthweight rate was essentially unchanged between 2008 and 2009 at 8.16 percent in 2009, but is down from 2006.

### **Introduction**

This report from the Centers for Disease Control and Prevention's National Center for Health Statistics (NCHS) presents preliminary data on births and birth rates and selected maternal and infant health characteristics for the United States in 2009. The findings are based on 99.95 percent of registered vital records occurring in calendar year 2009, which were received and processed by NCHS as of October 14, 2010. Trends in the preliminary reports for 1995-2008 births were confirmed by the final vital statistics for each year [1,2]. Comparisons are based on the final data for 2008 and earlier years [2].

State-specific detailed tables for 2009 births, based on preliminary data — showing the percentages of births to women under age 20 years, to unmarried women, delivered by

cesarean, born preterm, and low birthweight — are available on the NCHS website (see internet tables I-1-I-5 at [http://www.cdc.gov/nchs/data/nvsr/nvsr59/nvsr59\\_03\\_tables.pdf](http://www.cdc.gov/nchs/data/nvsr/nvsr59/nvsr59_03_tables.pdf)).

**Keywords: births • birth rates • maternal and infant health • vital statistics**

## Results

### Births and birth rates

Key findings are listed below and presented in **Tables 1-7** and **Figures 1-3**:

- The 2009 preliminary estimate of registered **births** for the United States was 4,131,019, 3 percent less than 2008 (4,247,694) (**Tables 1-3** and **Figure 1**) [2]. Early birth counts through June 2010 suggest continued decline [3]. Births declined for all race and Hispanic origin groups, down 4 percent for Hispanic women, 2 percent for non-Hispanic white, non-Hispanic black and American Indian or Alaska Native (AIAN) women, and 1 percent for Asian or Pacific Islander (API) women.
- The 2009 preliminary **crude birth rate** (CBR) was 13.5 births per 1,000 total population, 4 percent below the rate in 2008 (14.0), and the lowest rate ever recorded for the United States (**Table 1**) [4]. The 2009 **general fertility rate** (GFR) was 66.7 births per 1,000 women age 15-44 years, a 3 percent decline from the rate in 2008 (68.6) (**Table 1, 2 and 3** and **Figure 1**) and reversing the increases from 2006 to 2008 [2]. Rates based on early birth counts through June 2010 suggest continued decline [3]. The rates declined for all race and Hispanic origin groups, down 2-3 percent for non-Hispanic white, non-Hispanic black, and AIAN women, 4 percent for API women, and 6 percent for Hispanic women.
- The **birth rate for U.S. teenagers** fell 6 percent in 2009 according to preliminary data, the lowest level ever recorded in nearly seven decades of tracking teenage childbearing (since 1940) [2,4]. The number of births to teenagers under age 20 also fell 6 percent (**Table 2**).
  - The rate in 2009 was 39.1 births per 1,000 teenagers 15-19 years, down from 41.5 in 2008 and 8 percent lower than in 2007 (42.5) (see **Tables 2-5** and **Figures 2** and **3**). The 2007-2009 decline reverses two consecutive years of increase (2005-2007) that interrupted the 34-percent decline extending from the peak in 1991 to 2005 [2,4]. The rate for 2009 was 37 percent lower than in 1991 (61.8 per 1,000).
  - Rates declined for all age groups under 20 years. The rate for the youngest teenagers, 10-14 years, fell from 0.6 to 0.5 per 1,000, the lowest level ever reported.

- The birth rate for teenagers 15-17 years declined 7 percent to 20.1 per 1,000. This rate dropped 9 percent from 2007 (22.1) to 2009, and was 48 percent lower than the rate reported in 1991 (38.6 per 1,000).
- The birth rate for older teenagers dropped 6 percent in 2009, to 66.2 per 1,000 aged 18-19 years. The rate fell 10 percent from 2007 to 2009. The 2009 rate was 30 percent lower than in 1991 (94.0 per 1,000).
- Rates fell significantly for all race and Hispanic origin groups between 2008 and 2009, with declines ranging from 4 to 6 percent (for non-Hispanic white, non-Hispanic black, and AIAN teenagers). The rate for Hispanic teenagers aged 15-19 fell 10 percent in 2009 to 70.1 births per 1,000, the lowest rate ever reported for this group in the two decades for which rates for Hispanic teenagers are available. The rate for API teenagers dropped 10 percent. Rates for most groups reached historic lows [2].
- Teenage birth rates by state are not yet available for 2009 from the preliminary file. Recently published teen birth rates by state for 2008, moreover, indicated declines were widespread geographically [5].
- The **birth rate for women aged 20–24 years** declined 7 percent in 2009, to 96.3 births per 1,000 women from 103.0 in 2008 (**Tables 2-4** and **Figure 3**), the largest decline in this rate since 1973 [4]. The *number of births* to women in this group also declined in 2009 (4 percent) (**Tables 2-4**). The **rate for women aged 25–29 years** declined in 2009 as well, down 4 percent to 110.5 births per 1,000 women from 115.1 in 2008. The number of births to women aged 25–29 years decreased by 2 percent in 2009.
- The **birth rate for women aged 30–34 years** declined 2 percent in 2009 to 97.7 births per 1,000 women from 99.3 in 2008 (**Figure 3**). The number of births to women in this age group declined slightly in 2009. The **rate for women aged 35-39 years** also declined in 2009, down 1 percent to 46.6 births per 1,000, from 46.9 in 2008. This marks a two year decline in the rate for this group which had been increasing since 1978 [2,4]. The number of births to women aged 35-39 years decreased 3 percent in 2009.
- The **birth rate for women aged 40–44 years** rose in 2009, the only age group to do so, up 3 percent from 9.8 births per 1,000 women in 2008 to 10.1, the highest rate since 1967 (10.6) [2,4]. The **rate for women aged 45–49 years** (which includes births to women aged 50 years and over) was unchanged in 2009 at 0.7 births per 1,000 women (**Tables 2-4**). The number of births to women aged 40-44 years decreased slightly in 2009 whereas births to women aged 50 years and over increased by 4 percent.
- The 2009 preliminary **total fertility rate** (TFR) was 2,007.5 births per 1,000 women, 4 percent below the rate in 2008 (2,084.5) (**Table 1**). This is the largest decline in the

rate since 1973. The TFR estimates the number of births that a hypothetical group of 1,000 women would have over their lifetimes, based on the age-specific birth rates in a given year.

- The TFR for the United States was below replacement for the second year in 2009, after being above in 2006 and 2007. Replacement is the rate at which a given generation can exactly replace itself, generally considered to be 2,100 births per 1,000 women. The rate was below replacement from 1972 to 2005.
- The total fertility rate declined for all race and Hispanic origin groups in 2009, down 3-4 percent for non-Hispanic white, non-Hispanic black and AIAN women, 5 percent for API women, and 6 percent for Hispanic women.
- The 2009 preliminary **first birth rate** was 27.0 births per 1,000 women age 15-44 years, 3 percent below the rate in 2008 (27.7) (**Table 4**) [2]. First-birth rates declined for women aged 10-34 years (decreases ranging from 1 to 6 percent for women aged 15-34 years) and were unchanged for women aged 35-49 years. Second-, third-, and fourth and higher-order birth rates for women aged 15-44 years also declined in 2009.
- Preliminary 2009 **General fertility rates (GFR) for states** decreased for 40 states and Puerto Rico and were essentially unchanged (i.e., not statistically different) for the remaining states (Iowa, Kansas, Maine, Nebraska, New Hampshire, New York, North Dakota, South Dakota, Vermont, and West Virginia) and the District of Columbia, as well as Guam, American Samoa, and Northern Marianas. Rates by state continued to vary considerably, ranging from 50.8 births per 1,000 women age 15-44 years in Vermont to 88.4 in Utah (**Table 6**).
- The **birth rate for unmarried women** declined almost 4 percent from 2008 to 2009. The rate per 1,000 unmarried women aged 15-44 years was 50.6 in 2009 compared with 52.5 in 2008 (data not shown) [2]. The decline in the rate found for 2008-2009 was the first reported since a slight decline 2001-02. The rate had increased 20 percent from 2002 (43.7) to 2008 (52.5), following several years of relative stability.
  - The **total number of births** to unmarried women declined for the first time since 1996-1997, falling about 2 percent from 1,726,566 in 2008 to 1,693,850 in 2009 (**Table 7**). Increases in births to unmarried women during 2008-2009 were limited to age groups 30 years and older. Nonmarital births declined for teenagers and women in their twenties, the principal age groups for out-of-wedlock births.
  - The **proportion of all births to unmarried women** increased to 41.0 percent in 2009, up from 40.6 percent in 2008. This proportion increased for all race and Hispanic origin population groups except for AIAN women (**Tables 1 and 7**).

- Teenagers accounted for 21 percent of all nonmarital births in 2009, continuing a steady decline measured over the last several decades. In 1975, teenaged mothers comprised 52 percent of nonmarital births [6,7].
- The percentage of nonmarital births increased significantly in 16 states and declined in three areas (District of Columbia, Utah, and Washington); changes in other states were not significant. See Table I-2 for 2008 and 2009 percentage of nonmarital births by state.

## Maternal and Infant Health Birth Characteristics

Key findings are listed below and presented in **Tables 8** and **9** and **Figure 4**:

- The **cesarean delivery rate** rose to 32.9 percent in 2009, an increase of 2 percent and another record U.S. high. The percentage of births delivered by cesarean has been rising steadily for over a decade, and is up nearly 60% since 1996 (see **Table 8**) [2]. Between 2008 and 2009 cesarean delivery rates rose among women of all age groups 20 years and older, and all race and ethnicity groups. The largest increase was among non-Hispanic black women (up 3 percent); rates rose 1-2 percent among non-Hispanic white, Hispanic, AIAN and API women. In 2009, women 40 years and older were as likely to have a cesarean as a vaginal delivery, that is, ½ of all births to women in this age group were in a cesarean delivery (data not tabulated).
- The **preterm birth rate** declined in 2009 for the third straight year to 12.18 percent of all births, from 12.33 percent in 2008 (**Table 8**). The percentage of infants born preterm (less than 37 completed weeks of gestation) had risen by more than 1/3 from 1981 to 2006, but is down 5 percent from 2006 (**Table 9** and **Figure 4**) [2]. The lower preterm rate for 2009 marks the first sustained (more than 2 consecutive years) decline in this rate since 1981 when national gestational age data first became available.
  - The 2008-2009 decline in preterm births was among infants born early preterm (less than 34 weeks), *and* late preterm (34-36 weeks) (**Table 9**). The early preterm rate decreased from 3.56 percent to 3.51 percent and the late preterm rate from 8.77 percent to 8.66 percent. The late preterm rate has declined 5 percent since 2006.
  - Preterm birth rates were down among non-Hispanic white (11.14 percent to 10.92) and Hispanic infants (12.10 percent to 11.97) from 2008 to 2009; the small decline observed for non-Hispanic black births (17.54 percent to 17.47) was not statistically significant (**Table 8**). Rates for all 3 groups are down significantly since 2006 [2]. See also Table I-4 for 2008 and 2009 preterm birth rates by state.
- The **low birthweight rate (LBW)** was 8.16 percent in 2009, compared with 8.18 percent in 2008 (**Table 8**). The LBW rate (the percentage of infants born at less than 2,500 grams or 5 lb, 8 oz per 100 births) increased more than 20 percent from the mid

1980s through 2006, but is down very slightly since (8.26 percent in 2006) (**Figure 4**) [2].

- The 2009 rate of **very low birthweight** rate (less than 1,500 grams or 3 lb, 4 oz), was 1.45 percent, not statistically changed from 2008 (**Table 8**). The VLBW rate had declined between 2007 and 2008, following several decades of fairly steady increases [2].
- LBW levels in 2009 were not significantly different from 2008 for the **3 largest race and Hispanic origin groups**, non-Hispanic white (7.19 percent in 2009), non-Hispanic black (13.61) and Hispanic (6.94). Rates for non-Hispanic white and non-Hispanic black newborns are down 2-3 percent from 2006, however (**Table 8**) [2]. See Table I-5 for 2008 and 2009 low birthweight rate by state.

## References

1. Hamilton BE, Martin JA, Ventura SJ. Births: Preliminary data for 2008. National vital statistics reports; vol 58 no 16. Hyattsville, MD: National Center for Health Statistics. Released April 6, 2010. Available from: [http://www.cdc.gov/nchs/data/nvsr/nvsr58/nvsr58\\_16.pdf](http://www.cdc.gov/nchs/data/nvsr/nvsr58/nvsr58_16.pdf).
2. Martin JA, Hamilton BE, Sutton PD, Ventura SJ, Mathews TJ, Osterman MJK. Births: Final data for 2008. National vital statistics reports; vol 59 no 1. Hyattsville, MD: National Center for Health Statistics. 2010. Available from: [http://www.cdc.gov/nchs/data/nvsr/nvsr59/nvsr59\\_01.pdf](http://www.cdc.gov/nchs/data/nvsr/nvsr59/nvsr59_01.pdf).
3. Sutton PD. Recent trends in births and fertility rates through June 2010. Health E-Stat. National Center for Health Statistics. Released December 21, 2010. Available from: <http://www.cdc.gov/nchs/data/hestat/births2010/births2010.htm>.
4. National Center for Health Statistics. Vital statistics of the United States, 2003, volume I, natality. Available from: <http://www.cdc.gov/nchs/products/vsus.htm>.
5. Mathews TJ, Sutton, PD, Hamilton BE, Ventura SJ. State disparities in teenage birth rates in the United States. NCHS data brief, no 46. Hyattsville, MD: National Center for Health Statistics. 2010. Available from: <http://www.cdc.gov/nchs/data/databriefs/db46.pdf>.
6. Ventura SJ, Bachrach CA. Nonmarital childbearing in the United States, 1940-99. National vital Statistics reports; vol. 48 no. 16. Hyattsville, MD: National Center for Health Statistics. 2000. Available from: [http://www.cdc.gov/nchs/data/nvsr/nvsr48/nvs48\\_16.pdf](http://www.cdc.gov/nchs/data/nvsr/nvsr48/nvs48_16.pdf).
7. Ventura SJ. Changing patterns of nonmarital childbearing in the United States. NCHS data brief, no. 18. Hyattsville, MD: National Center for Health Statistics. 2009. Available from: <http://www.cdc.gov/nchs/data/databriefs/db18.pdf>.

8. National Center for Health Statistics. User Guide to the 2008 Natality Public Use File. Hyattsville, Maryland: National Center for Health Statistics. Annual product 2001. Available for downloading at:  
[ftp://ftp.cdc.gov/pub/Health\\_Statistics/NCHS/Dataset\\_Documentation/DVS/natality/UserGuide2008.pdf](ftp://ftp.cdc.gov/pub/Health_Statistics/NCHS/Dataset_Documentation/DVS/natality/UserGuide2008.pdf).
9. Hamilton BE, Martin JA, Ventura SJ. Births: Preliminary data for 2005. National vital statistics reports; vol 55 no 11. Hyattsville, MD: National Center for Health Statistics. 2006. Available from:  
[http://www.cdc.gov/nchs/data/nvsr/nvsr55/nvsr55\\_11.pdf](http://www.cdc.gov/nchs/data/nvsr/nvsr55/nvsr55_11.pdf).
10. National Center for Health Statistics. U.S. Certificate of Live Birth. 2003. Available from: <http://www.cdc.gov/nchs/data/dvs/birth11-03final-ACC.pdf>.
11. National Center for Health Statistics. Report of the Panel to Evaluate the U.S. Standard Certificates and Reports. National Center for Health Statistics. 2000. Available from: [http://www.cdc.gov/nchs/nvss/vital\\_certificate\\_revisions.htm](http://www.cdc.gov/nchs/nvss/vital_certificate_revisions.htm) and [http://www.cdc.gov/nchs/data/dvs/panelreport\\_acc.pdf](http://www.cdc.gov/nchs/data/dvs/panelreport_acc.pdf).
12. Office of Management and Budget. Revisions to the standards for the classification of federal data on race and ethnicity. Federal Register 62FR58781-58790. October 30, 1997. Available from:  
<http://www.whitehouse.gov/omb/fedreg/ombdir15.html>.
13. Office of Management and Budget. Race and ethnic standards for federal statistics and administrative reporting. Statistical Policy Directive 15. May 12, 1977.
14. Ingram DD, Parker JD, Schenker N, et al. United States Census 2000 with bridged race categories. National Center for Health Statistics. Vital Health Stat 2 (135). 2003. Available from:  
[http://www.cdc.gov/nchs/data/series/sr\\_02/sr02\\_135.pdf](http://www.cdc.gov/nchs/data/series/sr_02/sr02_135.pdf).
15. Johnson D. Coding and editing multiple race. Presented at the 2004 Joint Meeting of NAPHSIS and VSCP. Portland, Oregon. June 6-10, 2004. Available at:  
<http://www.naphsis.org/index.asp?downloadid=75>.
16. Weed JA. Coding and editing multiple race. Presented at the 2004 Joint Meeting of NAPHSIS and VSCP. Portland, Oregon. June 6-10, 2004. Available from:  
[http://www.cdc.gov/nchs/data/dvs/Multiple\\_race\\_docu\\_5-10-04.pdf](http://www.cdc.gov/nchs/data/dvs/Multiple_race_docu_5-10-04.pdf).
17. Hamilton BE, Ventura SJ. Characteristics of births to single- and multiple-race women: California, Hawaii, Pennsylvania, Utah, and Washington, 2003. National vital statistics reports; vol 55 no 15. Hyattsville, MD: National Center for Health Statistics. 2007. Available from:  
[http://www.cdc.gov/nchs/data/nvsr/nvsr55/nvsr55\\_15.pdf](http://www.cdc.gov/nchs/data/nvsr/nvsr55/nvsr55_15.pdf).



18. National Center for Health Statistics. Postcensal estimates of the resident population of the United States as of July 1, 2009, by year, state and county, age, bridged race, sex, and Hispanic origin (vintage 2009). File pcen\_v2009\_y09.txt (ASCII). Released July 23, 2010. Available from: [http://www.cdc.gov/nchs/nvss/bridged\\_race/data\\_documentation.htm#vintage2009](http://www.cdc.gov/nchs/nvss/bridged_race/data_documentation.htm#vintage2009).
19. U.S. Census Bureau. Unpublished tables. Population Division. U.S. Census Bureau. 2009.
20. U.S. Census Bureau. Puerto Rico single year of age and sex population estimates: April 1, 2000 to July 1, 2009. Released June, 2010. Available from: [http://www.census.gov/popest/puerto\\_rico/prcasrh.html](http://www.census.gov/popest/puerto_rico/prcasrh.html).
21. U.S. Census Bureau. Unpublished data from the March 2007 Current Population Survey. U.S. Census Bureau. 2007.
22. U.S. Census Bureau. Unpublished data from the March 2008 Current Population Survey. U.S. Census Bureau. 2008.
23. U.S. Census Bureau. Unpublished data from the March 2009 current population survey. U.S. Census Bureau. 2009.
24. U.S. Census Bureau. Unpublished data from the March 2010 current population survey. U.S. Census Bureau. 2010.

**List of Detailed Tables**

1. Total births and birth, fertility, and total fertility rates and nonmarital births, by race and Hispanic origin of mother: United States, final 2008 and preliminary 2009 .....
2. Births and birth rates by age, race and Hispanic origin of mother: United States, final 2008 and preliminary 2009 .....
3. Births by age of mother, live-birth order, and race and Hispanic origin of mother: United States, preliminary 2009 .....
4. Birth rates by age of mother, live-birth order, and race and Hispanic origin of mother: United States, preliminary 2009 .....
5. Birth rates for women under 20 years, by age, race, and Hispanic origin of mother: United States, final 1991, 2005-2008, and preliminary 2009; and percent change in rates, 1991-2005, 2005-2007, 2008-2009, and 2007-2009 .....

6. Births by race and Hispanic origin of mother, and birth and fertility rates: United States and each state and territory, preliminary 2009. . . . .
7. Births to unmarried women, by age: United States, final 2008 and preliminary 2009 . . . . .
8. Selected health characteristics of births, by race and Hispanic origin of mother: United States, final 2008 and preliminary 2009 . . . . .
9. Preterm births: United States, final 1990, 2000, 2005-2008 and preliminary 2009 . . . . .
10. Total count of records and completeness of preliminary file of live births: United States, each State and territory, preliminary 2009 . . . . .

## Technical Notes

### Nature and sources of data

Preliminary data for 2009 are based on nearly all births for that year (99.95 percent, see **Table 10**). Levels for 47 states and the District of Columbia were at 100.0 percent; levels for the remaining 3 states were above 99 percent. Preliminary 2009 data are based on a continuous receipt and processing of statistical records through October 14, 2010, by the Centers for Disease Control and Prevention’s (CDC) National Center for Health Statistics (NCHS). NCHS receives the data from the states’ vital registration systems through the Vital Statistics Cooperative Program. In this report, U.S. totals include only events occurring within the 50 states and the District of Columbia. Data for Puerto Rico, Guam, American Samoa, and Northern Marianas are included in tables showing data by state, but are not included in U.S. totals (see **Tables 6 and 10**) and state-specific internet tables at [http://www.cdc.gov/nchs/data/nvsr/nvsr59/nvsr59\\_03\\_tables.pdf](http://www.cdc.gov/nchs/data/nvsr/nvsr59/nvsr59_03_tables.pdf). Data for the Virgin Islands were not available as of release of the 2009 preliminary file and therefore data for this territory are not included in this report. Detailed information on reporting completeness and imputation procedures may be found in the “User Guide to the 2008 Natality Public Use File” [8].

To produce the preliminary estimates shown in this report, records in the file were weighted using independent control counts of all 2009 births by state of occurrence. Detailed information on weighting and the reliability of estimates also may be found elsewhere [9].

### The 1989 and 2003 U.S. Standard Certificates of Live Birth

This report includes selected 2009 data on items which are collected on both the 1989 Revision of the U.S. Standard Certificate of Live Birth (unrevised) and 2003 Revision of the U.S. Standard Certificate of Live Birth (revised). The 2003 revision is described in detail elsewhere [2,8,10,11]. Twenty-eight states (California, Colorado,

Delaware, Florida, Georgia, Idaho, Indiana, Iowa, Kansas, Kentucky, Michigan, Montana, Nebraska, New Hampshire, New Mexico, New York (including New York City), North Dakota, Ohio, Oregon, Pennsylvania, South Carolina, South Dakota, Tennessee, Texas, Utah, Vermont, Washington, and Wyoming) and Puerto Rico had implemented the revised birth certificate as of January 1, 2009. Two additional states, Nevada and Oklahoma, and the District of Columbia implemented the revised birth certificate in 2009, but after January 1. The thirty revised states and the District of Columbia represent 68 percent of all 2009 births; the twenty-eight revised states that implemented as of January 1, 2009, represent 66 percent of all 2009 births.

Data items exclusive to either the 1989 or the 2003 birth certificate revision are not shown in this report. A forthcoming report based on 2009 final data will present selected data exclusive to the 2003 revised certificate.

### **Age of mother**

For information and discussion of age of mother, see “User Guide to the 2008 Natality Public Use File” [8].

### **Hispanic origin and race**

#### *Hispanic origin*

Hispanic origin and race are reported separately on the birth certificate. Data shown by race (i.e., AIAN and API) include persons of Hispanic or non-Hispanic origin, and data for Hispanic origin include all persons of Hispanic origin of any race. Data for non-Hispanic persons are shown separately according to the race of the mother because there are substantial differences in fertility and maternal and infant health characteristics between Hispanic and non-Hispanic white women. Items asking for the Hispanic origin of the mother have been included on the birth certificates of all states and the District of Columbia, the Virgin Islands, and Guam since 1993, and on the birth certificate of Puerto Rico starting in 2005 [8]. American Samoa and the Northern Marianas do not collect this information.

#### *Single, Multiple and “Bridged” race*

The 2003 revision of the U.S. Standard Certificate of Live Birth allows the reporting of more than one race (multiple races) for each parent [10] in accordance with the revised standards issued by the Office of Management and Budget (OMB) in 1997 [12,13]. Information on this change is presented elsewhere [8,14-16].

In 2009, thirty-two states and the District of Columbia reported multiple-race; these states are California, Colorado, Delaware, Florida, Georgia, Idaho, Indiana, Iowa, Kansas, Kentucky, Michigan, Montana, Nebraska, Nevada (after January 1), New Hampshire, New Mexico, New York (including New York City), North Dakota, Ohio, Oklahoma (after January 1), Oregon, Pennsylvania, South Carolina, South Dakota, Tennessee, Texas, Utah, Vermont, Washington, Wyoming and the District of Columbia

(after January 1), which used the 2003 revision of the U.S. Standard Certificate of Live Birth, as well as Hawaii and Minnesota, which used the 1989 revision of the U.S. Standard Certificate of Live Birth. Puerto Rico, which revised its birth certificate in 2005, continued to report race according to the 1989 revision of the U.S. Standard Certificate of Live Birth (that is, as an open-ended question in which only one response is accepted). These thirty-two states and the District of Columbia accounted for 71 percent of U.S. births in 2009. Data from the vital records of the remaining eighteen states are based on the 1989 revision of the U.S. Standard Certificate of Live Birth that follows the 1977 Office of Management and Budget (OMB) standard, allowing only a single race to be reported [12-14].

To provide uniformity and comparability of the data during the transition period, before all or most of the data are available in the new multiple-race format, it was necessary to “bridge” the responses of those who reported more than one race (multiple race) to one, single race. The bridging procedure for multiple-race mothers and fathers is based on the procedure used to bridge the multiple-race population estimates (see “Population denominators”) [14-16]. Information detailing the processing and tabulation of data by race is presented elsewhere [8]. A recent report describes multiple race birth data for 2003 [17].

### **Marital status**

For information and discussion of marital status, see “User Guide to the 2008 Natality Public Use File” [8].

### **Method of delivery, Gestation, and Birthweight**

For information and discussion of method of delivery, gestational age, and birthweight, see “User Guide to the 2008 Natality Public Use File” [8].

### **Population denominators**

U.S. national and state level birth and fertility rates for 2009 shown in this report are based on population estimates based on the 2000 Census, as of July 1, 2009. These population estimates are available on the NCHS website [18]. The production of these population estimates is described in detail elsewhere [14].

Birth and fertility rates for the territories shown in this report are based on population estimates from U.S. Census Bureau [19,20].

Rates by state and territory shown in this report may differ from rates computed on the basis of other population estimates. Rates for states and territories with smaller populations, or groups with smaller populations, are more likely to be affected by differences in population base.

Information on the national estimates of births to unmarried women (i.e., methods of determining marital status) and the computation of the preliminary birth rates for

unmarried women is presented elsewhere [2,6,8]. The birth rates for unmarried women for 2008 and 2009 are estimated on the basis of 3-year averages of population distributions by marital status provided by the U.S. Census Bureau as of March 2007, 2008, 2009 and 2010 and applied to the national population estimates as of July 1 of 2008 and 2009 [6,18,21-24]. Both population files are based on the 2000 census.

The populations for the U.S. used in this report were produced under a collaborative arrangement with the U.S. Census Bureau and are based on the 2000 census counts. Reflecting the new guidelines issued in 1997 by the OMB, the 2000 census included an option for persons to report more than one race as appropriate for themselves and household members [12]. Beginning with births occurring in 2003, several states began reporting multiple race data. This number has increased to thirty-two states and the District of Columbia in 2009 (see *Single, Multiple and “Bridged” race*). In order to produce birth and fertility rates by race during the transition period, the bridging of the reported population data for multiple-race persons back to single-race categories was necessary. Once all states revise their birth certificates to be compliant with the 1997 OMB standards, the use of “bridged” populations can be discontinued. For detailed information on the revised OMB standards on race reporting and procedures used to produce the “bridged” populations, see “United States Census 2000 with Bridged Race Categories” [14].

### **Computing rates and percentages and Reliability of estimates**

For information and further discussion on computing rates and percentages and the relative standard errors of the data, see Births: Preliminary Data for 2005 [9].

### **Suggested citation**

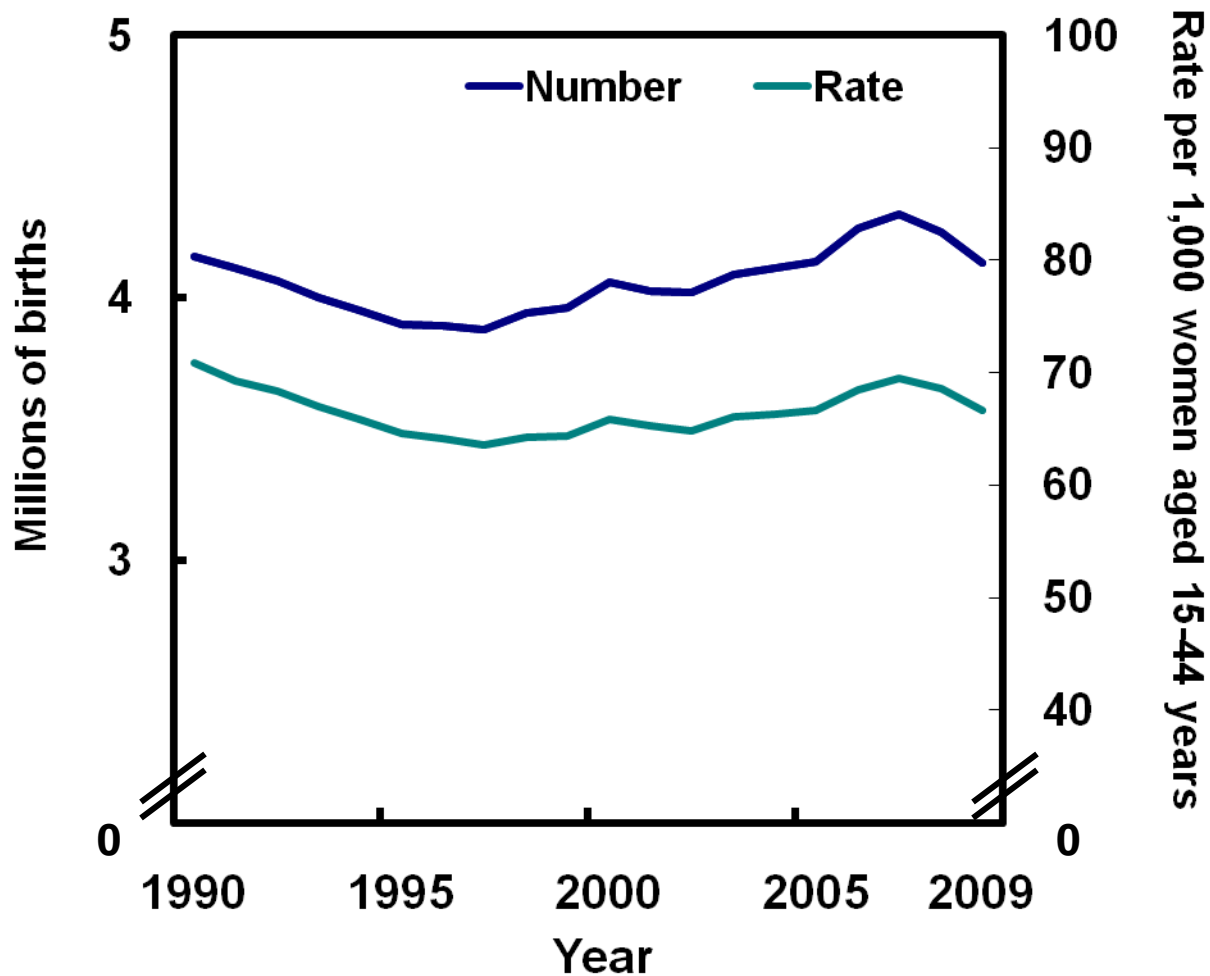
Hamilton BE, Martin JA, Ventura SJ. Births: Preliminary data for 2009. National vital statistics reports web release; vol 59 no 3. Hyattsville, MD: National Center for Health Statistics. 2010.

### **Acknowledgments**

This report was prepared under the general direction of Charles J Rothwell, Director of the Division of Vital Statistics (DVS) and Stephanie J. Ventura, Chief of the Reproductive Statistics Branch (RSB). Nicholas F. Pace, Chief of the Systems, Programming, and Statistical Resources Branch (SPSRB), and Steve J. Steimel, Candace M. Cosgrove, Annie S. Liu, Jordan Sacks, and Jaleh Mousavi provided computer programming support and statistical tables. Yashodhara Patel of RSB also provided statistical tables. Steve J. Steimel and Candace M. Cosgrove of SPSRB prepared the natality file. Michelle J.K. Osterman and Elizabeth C. Wilson of RSB provided content review. Staff of the Data Acquisition and Evaluation Branch carried out quality evaluation and acceptance procedures for the state data files on which this report is based. The Registration Methods staff of DVS consulted with state vital statistics offices

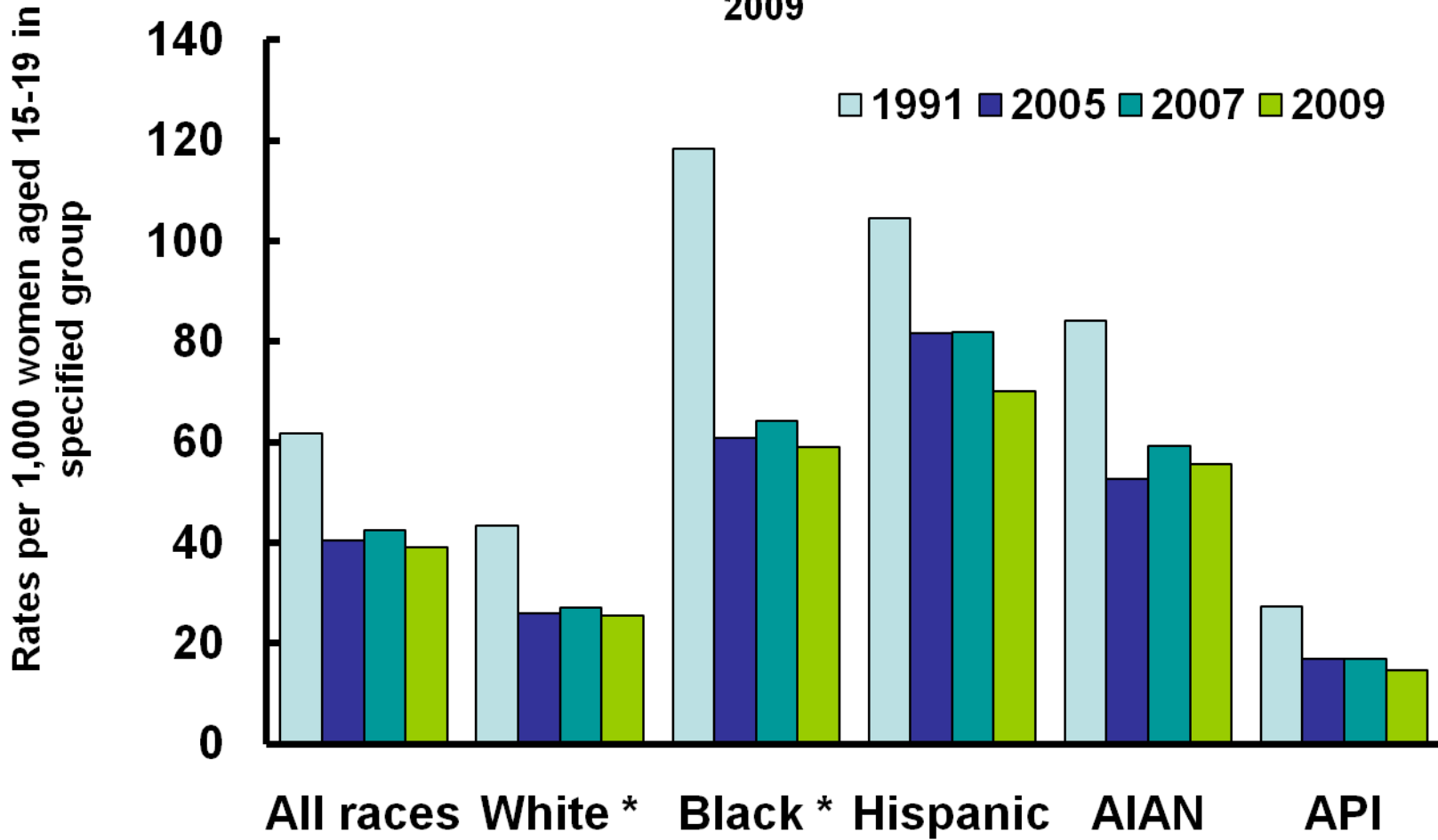
regarding the collection of birth certificate data. This report was edited by \_\_\_\_\_, CDC/CCHIS/NCHM/Division of Creative Services, Writer-Editor Services Branch, and typeset by Jacqueline M. Davis of CDC/CCHIS/NCHM/Division of Creative Services. Graphics were produced by \_\_\_\_\_, CDC/CCHIS/NCHM/Division of Creative Services, \_\_\_\_\_.

Figure 1. Live births and fertility rates: United States, final 1990-2008 and preliminary 2009



SOURCE: CDC/NCHS, National Vital Statistics System.

**Figure 2. Birth rates for teenagers 15-19 years by race and Hispanic origin: United States, final 1991, 2005, and 2007, and preliminary 2009**

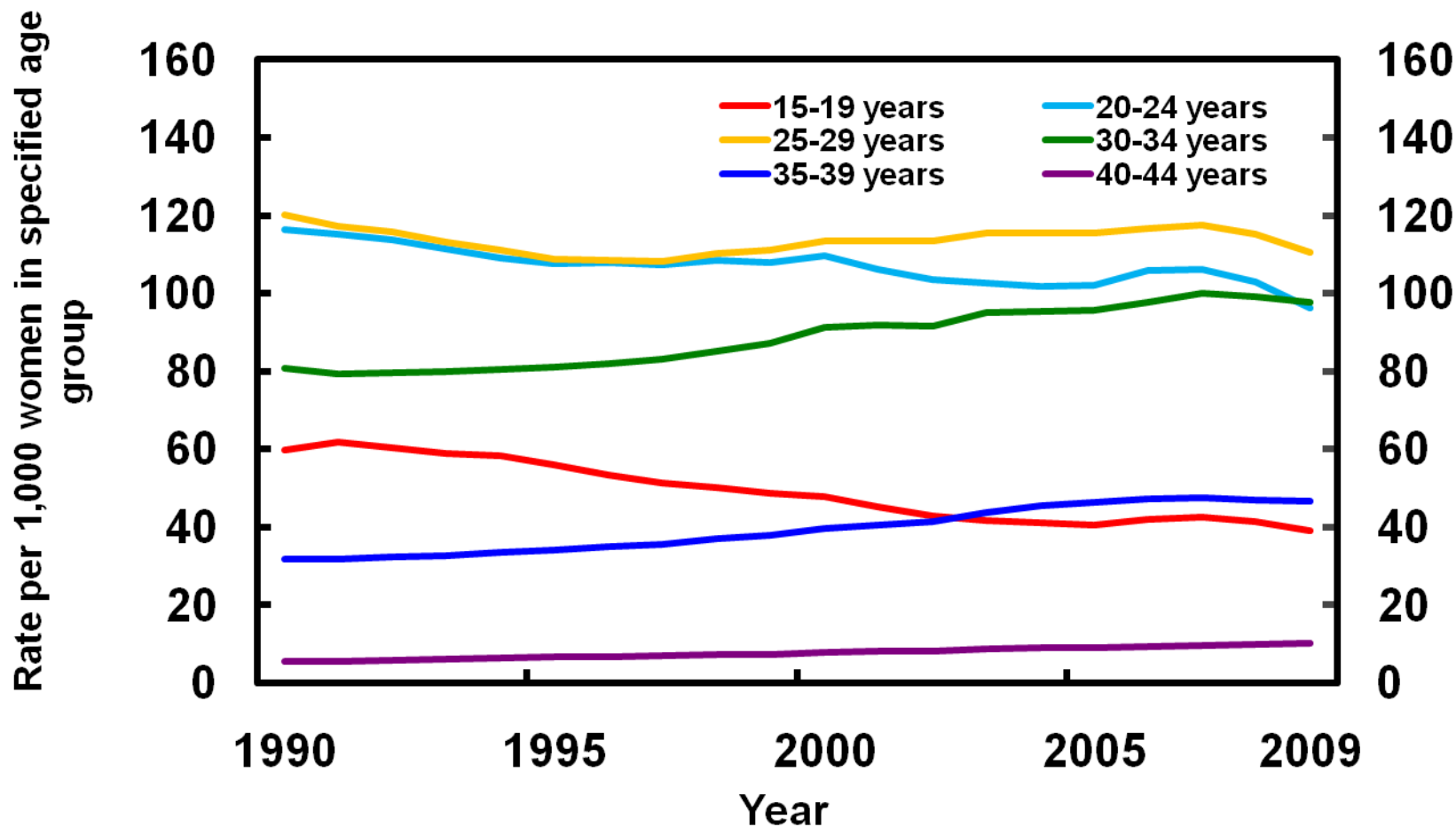


SOURCE: CDC/NCHS, National Vital Statistics System.

\* Non-Hispanic



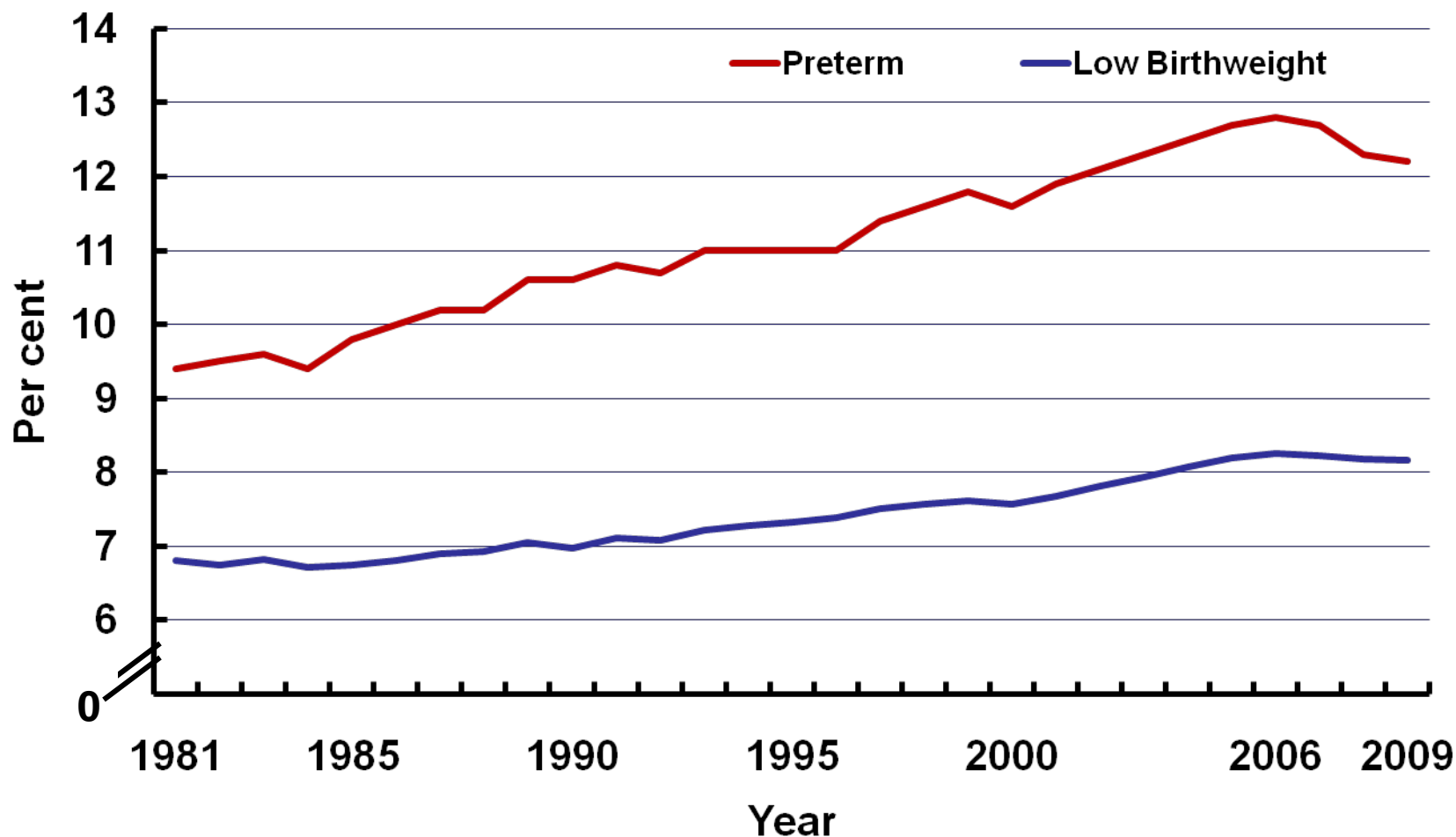
Figure 3. Birth rates by selected age of mother: United States, final 1990-2008 and preliminary 2009



NOTE: Rates are plotted on a logarithmic scale.  
 SOURCE: CDC/NCHS, National Vital Statistics System.

NOTE - Due to software limitation, this graph could not be plotted on a log scale. The published version of this graph will be plotted on a logarithmic scale.

**Figure 4. Preterm and low birthweight rates:  
United States, final 1981-2008 and preliminary 2009**



**NOTES:** Preterm birth rate is births less than 37 completed weeks of gestation per 100 total births. Low birthweight is births less than 2,500 grams per 100 total births.

**SOURCE:** CDC/NCHS, National Vital Statistics System.

**Table 1. Total births and birth, fertility, and total fertility rates and nonmarital births, by race and Hispanic origin of mother: United States, final 2008 and preliminary 2009**

[Data for 2009 are based on a continuous file of records received from the states. Figures for 2009 are based on weighted data rounded to the nearest individual. Birth rates are the total number of births per 1,000 population in specified group. Fertility rates are the total number of births (regardless of the age of the mother) per 1,000 women aged 15-44 years in specified group. Total fertility rates are sums of birth rates for 5-year age groups in specified group multiplied by 5]

Race and Hispanic origin of mother	Number		Birth rate		Fertility rate		Total fertility rate		Percent of births to unmarried women	
	2009	2008	2009	2008	2009	2008	2009	2008	2009	2008
All races and origins <sup>1</sup>	4,131,019	4,247,694	13.5	14.0	66.7	68.6	2,007.5	2,084.5	41.0	40.6
Non-Hispanic white <sup>2</sup>	2,211,960	2,267,817	11.0	11.3	58.5	59.4	1,780.0	1,832.0	29.0	28.7
Non-Hispanic black <sup>2</sup>	609,552	623,029	15.8	16.4	68.9	71.1	2,026.0	2,107.5	72.8	72.3
American Indian or Alaska Native total <sup>2,3</sup>	48,660	49,537	13.9	14.5	62.8	64.6	1,779.0	1,843.5	65.4	65.8
Asian or Pacific Islander total <sup>2,3</sup>	250,935	253,185	16.2	16.8	68.7	71.3	1,956.0	2,054.5	17.2	16.9
Hispanic <sup>4</sup>	999,632	1,041,239	20.6	22.2	93.3	98.8	2,732.5	2,911.5	53.2	52.6

<sup>1</sup> Includes origin not stated.

<sup>2</sup> Race and Hispanic origin are reported separately on birth certificates. Persons of Hispanic origin may be of any race. Race categories are consistent with the 1977 Office of Management and Budget (OMB) standards. In 2009, thirty-two states and the District of Columbia reported multiple-race data. The multiple-race data for these states were bridged to the single-race categories of the 1977 OMB standards for comparability with other states; see "Technical Notes." Multiple-race reporting areas vary for 2008-2009; see "Technical Notes."

<sup>3</sup> Data for persons of Hispanic origin are included for this race group; see "Technical Notes."

<sup>4</sup> Includes all persons of Hispanic origin of any race; see "Technical Notes."

NOTE: For information on the relative standard errors of the data and further discussion, see reference 9.

**Table 2. Births and birth rates by age, race and Hispanic origin of mother: United States, final 2008 and preliminary 2009**

[Data for 2009 are based on a continuous file of records received from the states. Figures for 2009 are based on weighted data rounded to the nearest individual, so categories may not add to totals. Rates per 1,000 women in specified age and race and Hispanic origin group]

Age and race and Hispanic origin of mother	2009		2008	
	Number	Rate	Number	Rate
<b>All races and origins <sup>1</sup></b>				
Total <sup>2</sup>	4,131,019	66.7	4,247,694	68.6
10-14 years	5,030	0.5	5,764	0.6
15-19 years	409,840	39.1	434,758	41.5
15-17 years	124,256	20.1	135,664	21.7
18-19 years	285,584	66.2	299,094	70.6
20-24 years	1,006,055	96.3	1,052,184	103.0
25-29 years	1,166,904	110.5	1,195,774	115.1
30-34 years	955,300	97.7	956,716	99.3
35-39 years	474,143	46.6	488,875	46.9
40-44 years	105,813	10.1	105,973	9.8
45-54 years <sup>3</sup>	7,934	0.7	7,650	0.7
<b>Non-Hispanic White <sup>4</sup></b>				
Total <sup>2</sup>	2,211,960	58.5	2,267,817	59.4
10-14 years	1,055	0.2	1,104	0.2
15-19 years	159,526	25.6	168,684	26.7
15-17 years	39,965	11.0	42,991	11.5
18-19 years	119,561	46.1	125,693	48.5
20-24 years	490,555	76.7	511,758	80.7
25-29 years	657,466	102.6	670,814	106.0
30-34 years	564,928	97.4	562,032	98.7
35-39 years	273,146	43.9	287,453	44.7
40-44 years	60,436	9.0	61,268	8.8
45-54 years <sup>3</sup>	4,849	0.6	4,704	0.6
<b>Non-Hispanic Black <sup>4</sup></b>				
Total <sup>2</sup>	609,552	68.9	623,029	71.1
10-14 years	1,704	1.2	2,131	1.4
15-19 years	98,425	59.0	104,559	62.8
15-17 years	31,547	32.1	34,656	34.8
18-19 years	66,878	97.5	69,903	104.6
20-24 years	194,103	123.8	198,116	130.6
25-29 years	153,217	101.9	156,472	105.7
30-34 years	98,903	73.2	98,062	74.9
35-39 years	50,006	36.5	50,506	36.7
40-44 years	12,319	9.0	12,377	8.8
45-54 years <sup>3</sup>	875	0.6	806	0.6
<b>American Indian or Alaska Native total <sup>4,5</sup></b>				
Total <sup>2</sup>	48,660	62.8	49,537	64.6
10-14 years	108	0.8	126	0.9
15-19 years	8,316	55.5	8,815	58.4
15-17 years	2,680	30.6	2,916	32.5
18-19 years	5,636	90.5	5,899	96.6
20-24 years	16,233	109.1	16,801	115.6
25-29 years	12,634	90.8	12,649	94.4
30-34 years	7,394	63.8	7,166	63.8
35-39 years	3,213	29.0	3,210	28.8
40-44 years	722	6.5	727	6.4
45-54 years <sup>3</sup>	39	0.3	43	0.4

See footnotes at end of table.

Table 2. Births and birth rates by age, race and Hispanic origin of mother: United States, final 2008 and preliminary 2009---Con.

[Data for 2009 are based on a continuous file of records received from the states. Figures for 2009 are based on weighted data rounded to the nearest individual, so categories may not add to totals. Rates per 1,000 women in specified age and race and Hispanic origin group]

Age and race and Hispanic origin of mother	2009		2008	
	Number	Rate	Number	Rate
Asian or Pacific Islander total <sup>4,5</sup>				
Total <sup>2</sup>	250,935	68.7	253,185	71.3
10-14 years	76	0.2	81	0.2
15-19 years	7,041	14.6	7,537	16.2
15-17 years	2,025	7.1	2,205	7.9
18-19 years	5,016	25.7	5,332	28.4
20-24 years	29,395	57.5	31,038	64.4
25-29 years	70,496	110.5	71,220	120.1
30-34 years	85,280	123.3	85,538	126.8
35-39 years	48,078	68.1	47,616	66.8
40-44 years	9,854	15.8	9,443	15.2
45-54 years <sup>3</sup>	714	1.2	712	1.2
Hispanic <sup>6</sup>				
Total <sup>2</sup>	999,632	93.3	1,041,239	98.8
10-14 years	2,073	1.0	2,326	1.2
15-19 years	136,274	70.1	144,914	77.5
15-17 years	48,023	41.0	52,872	46.1
18-19 years	88,251	114.0	92,042	127.2
20-24 years	274,746	151.2	293,054	170.7
25-29 years	270,661	145.0	281,319	152.6
30-34 years	195,746	108.2	199,984	109.6
35-39 years	97,271	56.1	97,235	56.1
40-44 years	21,640	14.0	21,242	13.7
45-54 years <sup>3</sup>	1,222	0.9	1,165	0.9

<sup>1</sup> Includes origin not stated.

<sup>2</sup> The total number includes births to women of all ages. The rate shown for all ages is the fertility rate, which is defined as the total number of births (regardless of the age of the mother) per 1,000 women aged 15-44 years.

<sup>3</sup> The birth rate for women aged 45-49 years is computed by relating the number of births to women aged 45 years and over to women aged 45-49 years, because most of the births in this group are to women aged 45-49.

<sup>4</sup> Race and Hispanic origin are reported separately on birth certificates. Persons of Hispanic origin may be of any race. Race categories are consistent with the 1977 Office of Management and Budget (OMB) standards. In 2009, thirty-two states and the District of Columbia reported multiple-race data. The multiple-race data for these states were bridged to the single-race categories of the 1977 OMB standards for comparability with other states; see "Technical Notes." Multiple-race reporting areas vary for 2008-2009; see "Technical Notes."

<sup>5</sup> Data for persons of Hispanic origin are included for this race group; see "Technical Notes."

<sup>6</sup> Includes all persons of Hispanic origin of any race; see "Technical Notes."

NOTE: For information on the relative standard errors of the data and further discussion; see reference 9.

Table 3. Births by age of mother, live-birth order, and race and Hispanic origin of mother: United States, preliminary 2009

[Data are based on a continuous file of records received from the states. Figures are based on weighted data rounded to the nearest individual, so categories may not add to totals]

Live-birth order and race and Hispanic origin of mother	All ages	Age of mother							
		Under 15 years	15-19 years	20-24 years	25-29 years	30-34 years	35-39 years	40-44 years	45-54 years
All races and origins <sup>1</sup>	4,131,019	5,030	409,840	1,006,055	1,166,904	955,300	474,143	105,813	7,934
1st child	1,660,342	4,920	330,532	493,880	426,391	272,229	106,979	23,324	2,087
2d child	1,291,155	70	65,705	330,362	383,698	326,916	152,566	29,803	2,035
3d child	679,183	3	9,739	127,302	214,752	196,274	107,933	21,846	1,334
4th child and over	473,735	1	1,316	47,821	134,760	153,961	103,450	30,023	2,403
Not stated	26,604	36	2,547	6,690	7,302	5,920	3,214	818	75
Non-Hispanic White <sup>2</sup>	2,211,960	1,055	159,526	490,555	657,466	564,928	273,146	60,436	4,849
1st child	934,878	1,034	134,558	262,943	273,819	178,315	67,877	14,919	1,412
2d child	718,830	13	21,534	156,858	220,781	205,638	94,115	18,552	1,339
3d child	341,502	2	2,507	52,620	105,165	107,661	60,638	12,092	816
4th child and over	205,934	-	257	15,723	54,727	70,527	48,978	14,477	1,245
Not stated	10,817	6	670	2,410	2,973	2,787	1,539	394	37
Non-Hispanic Black <sup>2</sup>	609,552	1,704	98,425	194,103	153,217	98,903	50,006	12,319	875
1st child	239,262	1,670	77,167	86,302	41,249	20,932	9,404	2,353	184
2d child	170,181	17	16,801	62,056	46,637	28,117	13,397	2,963	193
3d child	102,078	1	2,999	29,180	33,204	22,492	11,455	2,592	155
4th child and over	91,425	1	524	14,508	30,464	26,184	15,143	4,268	333
Not stated	6,606	15	934	2,057	1,662	1,179	606	143	10
American Indian or Alaska Native total <sup>2,3</sup>	48,660	108	8,316	16,233	12,634	7,394	3,213	722	39
1st child	17,450	108	6,525	6,501	2,690	1,144	402	75	4
2d child	13,030	-	1,464	5,551	3,544	1,739	623	105	4
3d child	8,568	-	256	2,744	3,067	1,686	691	119	4
4th child and over	9,342	-	29	1,361	3,252	2,775	1,482	416	26
Not stated	270	-	42	76	80	49	15	7	1
Asian or Pacific Islander total <sup>2,3</sup>	250,935	76	7,041	29,395	70,496	85,280	48,078	9,854	714
1st child	113,339	75	5,770	17,514	38,723	34,399	14,053	2,589	215
2d child	88,742	-	1,045	8,036	21,009	34,975	19,960	3,504	213
3d child	30,995	-	143	2,580	6,772	10,340	8,975	2,069	115
4th child and over	16,479	-	16	1,035	3,593	5,166	4,875	1,629	164
Not stated	1,380	1	67	230	398	399	215	63	7
Hispanic <sup>4</sup>	999,632	2,073	136,274	274,746	270,661	195,746	97,271	21,640	1,222
1st child	351,053	2,022	106,321	120,036	68,737	36,143	14,418	3,152	222
2d child	297,955	40	24,901	97,711	91,241	55,579	23,808	4,433	242
3d child	195,086	-	3,839	40,165	66,357	53,841	25,827	4,849	208
4th child and over	149,458	-	487	15,178	42,624	48,978	32,578	9,072	541
Not stated	6,080	11	725	1,656	1,702	1,205	639	133	9

- Quantity zero.

<sup>1</sup> Includes origin not stated.

<sup>2</sup> Race and Hispanic origin are reported separately on birth certificates. Persons of Hispanic origin may be of any race. Race categories are consistent with the 1977 Office of Management and Budget (OMB) standards. In 2009, thirty-two states and the District of Columbia reported multiple-race data. The multiple-race data for these states were bridged to the single-race categories of the 1977 OMB standards for comparability with other states; see "Technical Notes."

<sup>3</sup> Data for persons of Hispanic origin are included for this race group; see "Technical Notes."

<sup>4</sup> Includes all persons of Hispanic origin of any race; see "Technical Notes."

NOTE: For information on the relative standard errors of the data and further discussion, see reference 9.

Table 4. Birth rates by age of mother, live-birth order, and race and Hispanic origin of mother: United States, preliminary 2009

[Data are based on a continuous file of records received from the states. Rates per 1,000 women in specified age and race and Hispanic origin group]

Live-birth order and race and Hispanic origin of mother	15-44 years <sup>1</sup>	Age of mother							
		10-14 years	15-19 years	20-24 years	25-29 years	30-34 years	35-39 years	40-44 years	45-49 years <sup>2</sup>
All races and origins <sup>3</sup>	66.7	0.5	39.1	96.3	110.5	97.7	46.6	10.1	0.7
1st child	27.0	0.5	31.7	47.6	40.6	28.0	10.6	2.2	0.2
2d child	21.0	0.0	6.3	31.8	36.6	33.6	15.1	2.9	0.2
3d child	11.0	*	0.9	12.3	20.5	20.2	10.7	2.1	0.1
4th child and over	7.7	*	0.1	4.6	12.8	15.8	10.2	2.9	0.2
Non-Hispanic White <sup>4</sup>	58.5	0.2	25.6	76.7	102.6	97.4	43.9	9.0	0.6
1st child	24.8	0.2	21.7	41.3	42.9	30.9	11.0	2.2	0.2
2d child	19.1	*	3.5	24.6	34.6	35.6	15.2	2.8	0.2
3d child	9.1	*	0.4	8.3	16.5	18.6	9.8	1.8	0.1
4th child and over	5.5	*	0.0	2.5	8.6	12.3	7.9	2.2	0.2
Non-Hispanic Black <sup>4</sup>	68.9	1.2	59.0	123.8	101.9	73.2	36.5	9.0	0.6
1st child	27.3	1.1	46.7	55.7	27.8	15.7	7.0	1.7	0.1
2d child	19.4	*	10.2	40.0	31.3	21.0	9.9	2.2	0.1
3d child	11.7	*	1.8	18.8	22.3	16.8	8.4	1.9	0.1
4th child and over	10.5	*	0.3	9.4	20.5	19.6	11.2	3.1	0.2
American Indian or Alaska Native total <sup>4,5</sup>	62.8	0.8	55.5	109.1	90.8	63.8	29.0	6.5	0.3
1st child	22.6	0.8	43.8	43.9	19.4	9.9	3.6	0.7	*
2d child	16.9	*	9.8	37.5	25.6	15.1	5.6	1.0	*
3d child	11.1	*	1.7	18.5	22.2	14.7	6.3	1.1	*
4th child and over	12.1	*	0.2	9.2	23.5	24.1	13.4	3.8	0.2
Asian or Pacific Islander total <sup>4,5</sup>	68.7	0.2	14.6	57.5	110.5	123.3	68.1	15.8	1.2
1st child	31.2	0.2	12.1	34.5	61.0	50.0	20.0	4.2	0.4
2d child	24.4	*	2.2	15.8	33.1	50.8	28.4	5.6	0.4
3d child	8.5	*	0.3	5.1	10.7	15.0	12.8	3.3	0.2
4th child and over	4.5	*	*	2.0	5.7	7.5	6.9	2.6	0.3
Hispanic <sup>6</sup>	93.3	1.0	70.1	151.2	145.0	108.2	56.1	14.0	0.9
1st child	33.0	1.0	55.0	66.5	37.1	20.1	8.4	2.0	0.2
2d child	28.0	0.0	12.9	54.1	49.2	30.9	13.8	2.9	0.2
3d child	18.3	*	2.0	22.2	35.8	30.0	15.0	3.1	0.2
4th child and over	14.0	*	0.3	8.4	23.0	27.3	18.9	5.9	0.4

0.0 Quantity more than zero but less than 0.05.

\* Figure does not meet standards of reliability or precision; based on fewer than 20 births in the numerator.

<sup>1</sup> The rate shown is the fertility rate, which is defined as the total number of births, regardless of age of mother, per 1,000 women aged 15-44 years.

<sup>2</sup> The birth rate for ages 45-49 years is computed by relating births to women aged 45 years and over to women aged 45-49 years, because most of the births in this group are to women aged 45-49.

<sup>3</sup> Includes origin not stated.

<sup>4</sup> Race and Hispanic origin are reported separately on birth certificates. Persons of Hispanic origin may be of any race. Race categories are consistent with the 1977 Office of Management and Budget (OMB) standards. In 2009, thirty-two states and the District of Columbia reported multiple-race data. The multiple-race data for these states were bridged to the single-race categories of the 1977 OMB standards for comparability with other states; see "Technical Notes."

<sup>5</sup> Data for persons of Hispanic origin are included for this race group; see "Technical Notes."

<sup>6</sup> Includes all persons of Hispanic origin of any race; see "Technical Notes."

NOTE: For information on the relative standard errors of the data and further discussion, see reference 9.

**Table 5. Birth rates for women under 20 years, by age, race, and Hispanic origin of mother: United States, final 1991, 2005-2008, and preliminary 2009; and percent change in rates, 1991-2005, 2005-2007, 2008-2009, and 2007-2009**

[Data for 2009 are based on continuous files of records received from the states. Rates per 1,000 women in specified age and race and Hispanic origin group]

Age and race and Hispanic origin of mother	Year						Percent change			
	2009	2008	2007	2006	2005	1991	2007-2009	2008-2009	2005-2007	1991-2005
10-14 years										
All races and origins <sup>1</sup>	0.5	0.6	0.6	0.6	0.7	1.4	-17	-17	-14	-50
Non-Hispanic white <sup>2</sup>	0.2	0.2	0.2	0.2	0.2	0.5	†	†	†	-60
Non-Hispanic black <sup>2</sup>	1.2	1.4	1.5	1.6	1.7	4.9	-20	-14	-12	-65
American Indian or Alaska Native total <sup>2,3</sup>	0.8	0.9	0.9	0.9	0.9	1.6	-11	-11	†	-44
Asian or Pacific Islander total <sup>2,3</sup>	0.2	0.2	0.2	0.2	0.2	0.8	†	†	†	-75
Hispanic <sup>4</sup>	1.0	1.2	1.2	1.3	1.3	2.4	-17	-17	-8	-46
15-19 years										
All races and origins <sup>1</sup>	39.1	41.5	42.5	41.9	40.5	61.8	-8	-6	5	-34
Non-Hispanic white <sup>2</sup>	25.6	26.7	27.2	26.6	25.9	43.4	-6	-4	5	-40
Non-Hispanic black <sup>2</sup>	59.0	62.8	64.2	63.7	60.9	118.2	-8	-6	5	-48
American Indian or Alaska Native total <sup>2,3</sup>	55.5	58.4	59.3	55	52.7	84.1	-6	-5	13	-37
Asian or Pacific Islander total <sup>2,3</sup>	14.6	16.2	16.9	17	17	27.3	-14	-10	†	-38
Hispanic <sup>4</sup>	70.1	77.5	81.8	83	81.7	104.6	-14	-10	†	-22
15-17 years										
All races and origins <sup>1</sup>	20.1	21.7	22.1	22	21.4	38.6	-9	-7	3	-45
Non-Hispanic white <sup>2</sup>	11.0	11.5	11.8	11.8	11.5	23.6	-7	-4	3	-51
Non-Hispanic black <sup>2</sup>	32.1	34.8	35.8	36.2	34.9	86.1	-10	-8	3	-59
American Indian or Alaska Native total <sup>2,3</sup>	30.6	32.5	31.8	30.7	30.5	51.9	-4	-6	†	-41
Asian or Pacific Islander total <sup>2,3</sup>	7.1	7.9	8.2	8.8	8.2	16.3	-13	-10	†	-50
Hispanic <sup>4</sup>	41.0	46.1	47.9	47.9	48.5	69.2	-14	-11	-1	-30
18-19 years										
All races and origins <sup>1</sup>	66.2	70.6	73.9	73	69.9	94	-10	-6	6	-26
Non-Hispanic white <sup>2</sup>	46.1	48.5	50.4	49.3	48	70.6	-9	-5	5	-32
Non-Hispanic black <sup>2</sup>	97.5	104.6	109.3	108.4	103	162.2	-11	-7	6	-36
American Indian or Alaska Native total <sup>2,3</sup>	90.5	96.6	101.6	93	87.6	134.2	-11	-6	16	-35
Asian or Pacific Islander total <sup>2,3</sup>	25.7	28.4	29.9	29.5	30.1	42.2	-14	-10	†	-29
Hispanic <sup>4</sup>	114.0	127.2	137.2	139.7	134.6	155.5	-17	-10	2	-13

† Difference not statistically significant.

<sup>1</sup> Includes origin not stated.

<sup>2</sup> Race and Hispanic origin are reported separately on birth certificates. Persons of Hispanic origin may be of any race. Race categories are consistent with the 1977 Office of Management and Budget (OMB) standards. In 2009, thirty-two states and the District of Columbia reported multiple-race data. The multiple-race data for these states were bridged to the single-race categories of the 1977 OMB standards for comparability with other states; see "Technical Notes." Multiple-race reporting areas vary for 2005-2008; see "Technical Notes."

<sup>3</sup> Data for persons of Hispanic origin are included in the data for each race group according to the mother's reported race; see "Technical Notes."

<sup>4</sup> Includes all persons of Hispanic origin of any race; see "Technical Notes."

NOTE: For information on the relative standard errors of the data and further discussion, see reference 9.



**Table 6. Births by race and Hispanic origin of mother, and birth and fertility rates: United States and each state and territory, preliminary 2009**

rounded to the nearest individual, so categories may not add to totals. Birth rates are total births per 1,000 total population; fertility rates are total births per 1,000 women aged 15-44 years]

Area	Number						Birth rate All races	Fertility rate All races
	All races and origins <sup>1</sup>	Non-Hispanic white <sup>2</sup>	Non-Hispanic black <sup>2</sup>	American Indian or Alaska Native total <sup>2,3</sup>	Asian or Pacific Islander total <sup>2,3</sup>	Hispanic <sup>4</sup>		
United States <sup>5</sup>	4,131,019	2,211,960	609,552	48,660	250,935	999,632	13.5	66.7
Alabama	62,476	36,902	19,230	217	989	5,134	13.3	65.7
Alaska	11,325	6,018	409	2,960	950	695	16.2	78.3
Arizona	92,816	40,044	4,136	6,271	3,442	39,176	14.1	71.5
Arkansas	39,853	26,998	7,649	214	669	4,208	13.8	70.1
California	527,011	146,392	31,090	3,669	71,457	270,239	14.3	68.5
Colorado	68,627	41,169	3,120	770	2,543	20,680	13.7	66.8
Connecticut	38,896	22,798	4,971	275	2,232	8,589	11.1	56.5
Delaware	11,562	6,183	3,178	22	517	1,648	13.1	65.4
District of Columbia	9,044	2,344	4,720	28	406	1,510	15.1	60.0
Florida	221,391	100,575	50,723	644	7,409	61,987	11.9	63.6
Georgia	141,375	61,732	46,242	360	5,976	24,595	14.4	67.7
Hawaii	18,888	4,603	411	107	12,562	3,135	14.6	75.8
Idaho	23,731	19,048	136	458	419	3,681	15.4	77.4
Illinois	171,255	90,964	29,947	269	9,616	40,425	13.3	64.7
Indiana	86,698	66,345	10,076	130	1,994	8,079	13.5	67.6
Iowa	39,700	33,381	1,907	256	1,060	3,210	13.2	68.7
Kansas	41,396	29,856	3,063	375	1,366	6,795	14.7	74.7
Kentucky	57,558	48,059	5,438	82	1,075	2,986	13.3	66.6
Louisiana	64,988	34,591	25,150	452	1,263	3,558	14.5	69.8
Maine	13,470	12,504	392	125	236	198	10.2	54.8
Maryland	75,061	34,014	24,992	201	5,388	10,612	13.2	63.8
Massachusetts	75,104	50,411	7,228	174	6,040	11,021	11.4	55.4
Michigan	117,293	81,218	22,071	824	4,091	7,921	11.8	59.8
Minnesota	70,648	51,290	6,475	1,755	5,313	5,625	13.4	67.5
Mississippi	42,905	21,510	19,043	339	479	1,514	14.5	70.9
Missouri	78,920	60,184	12,026	375	2,028	4,290	13.2	66.2
Montana	12,261	10,002	65	1,537	134	424	12.6	67.3
Nebraska	26,937	19,783	1,759	598	822	4,265	15.0	76.4
Nevada	37,627	15,939	3,602	514	3,146	14,353	14.2	71.2
New Hampshire	13,378	11,955	217	23	577	552	10.1	51.9
New Jersey	110,324	52,161	17,131	179	11,668	29,003	12.7	64.5
New Mexico	29,002	8,081	513	3,998	498	16,159	14.4	73.4
New York	248,110	119,530	40,982	748	23,274	59,791	12.7	61.7
North Carolina	126,846	70,428	30,317	1,828	4,107	20,171	13.5	66.3
North Dakota	9,001	7,319	162	1,035	159	312	13.9	70.8
Ohio	144,772	109,698	23,834	288	3,540	6,892	12.5	63.8
Oklahoma	54,574	34,734	5,086	6,391	1,365	7,273	14.8	74.9
Oregon	47,199	32,849	1,144	919	2,731	9,701	12.3	62.5
Pennsylvania	146,432	103,302	21,482	413	6,416	14,115	11.6	60.1
Rhode Island	11,443	6,979	906	178	662	2,508	10.9	53.6
South Carolina	60,632	33,985	19,480	206	1,236	5,562	13.3	66.3
South Dakota	11,935	9,118	247	2,018	153	476	14.7	77.8
Tennessee	82,213	55,446	17,405	319	2,107	7,433	13.1	64.7
Texas	402,011	137,603	45,493	1,174	16,948	201,241	16.2	77.6
Utah	53,887	42,388	548	764	1,629	8,773	19.4	88.4
Vermont	6,109	5,803	76	17	111	94	9.8	50.8
Virginia	105,056	60,404	23,021	179	7,780	13,688	13.3	64.4
Washington	89,284	56,543	4,083	2,407	9,134	17,189	13.4	66.4
West Virginia	21,270	19,962	831	20	146	231	11.7	61.7
Wisconsin	70,840	52,460	7,288	1,258	2,969	6,934	12.5	63.7
Wyoming	7,884	6,355	56	296	102	981	14.5	75.0
Puerto Rico	44,765	1,028	146	---	---	43,569	11.3	53.3
Virgin Islands	---	---	---	---	---	---	---	---
Guam	3,417	214	33	3	3,125	48	19.2	87.9
American Samoa	1,340	---	---	1	1,335	---	20.4	90.4
Northern Marianas	1,110	---	---	-	1,098	---	21.6	77.1

--- Data not available.

- Quantity zero.

<sup>1</sup> Includes origin not stated.

<sup>2</sup> Race and Hispanic origin are reported separately on birth certificates. Persons of Hispanic origin may be of any race. Race categories are consistent with the 1977 Office of Management and Budget (OMB) standards. In 2009, thirty-two states and the District of Columbia reported multiple race data. The multiple-race data for these states were bridged to the single race categories of the 1977 OMB standards for comparability with other states; see "Technical Notes."

<sup>3</sup> Data for persons of Hispanic origin are included for this race group; see "Technical Notes."

<sup>4</sup> Includes all persons of Hispanic origin of any race; see "Technical Notes."

<sup>5</sup> Excludes data for the territories.

NOTE: For information on the relative standard errors of the data and further discussion; see reference 9.

**Table 7. Births to unmarried women, by age: United States, final 2008 and preliminary 2009**

[Data for 2009 are based on continuous files of records received from the states. Figures for 2009 are based on weighted data rounded to the nearest individual, so categories may not add to total]

Age of mother	Number		Percent	
	2009	2008	2009	2008
All ages	1,693,850	1,726,566	41.0	40.6
Under 20 years	362,490	382,554	87.4	86.8
Under 15 years	4,980	5,710	99.0	99.1
15-19 years	357,510	376,844	87.2	86.7
15-17 years	117,104	127,113	94.2	93.7
18-19 years	240,406	249,731	84.2	83.5
20-24 years	624,354	640,746	62.1	60.9
25-29 years	394,616	397,335	33.8	33.2
30-34 years	198,183	193,434	20.7	20.2
35-39 years	89,873	88,853	19.0	18.2
40 years and over	24,332	23,644	21.4	20.8

NOTE: For information on the relative standard errors of the data and further discussion, see reference 9.

**Table 8. Selected health characteristics of births, by race and Hispanic origin of mother: United States, final 2008 and preliminary 2009**

[Data are based on a continuous file of records received from the states. Figures are based on weighted data rounded to the nearest individual]

Race and Hispanic origin of mother	Births		Cesarean		Preterm				Low birthweight			
					Total <sup>1</sup>		Very preterm <sup>2</sup>		Total <sup>3</sup>		Very low birthweight <sup>4</sup>	
	2009	2008	2009	2008	2009	2008	2009	2008	2009	2008	2009	2008
	Number				Percentage							
All races and origins <sup>5</sup>	4,131,019	4,247,694	32.9	32.3	12.18	12.33	1.97	1.99	8.16	8.18	1.45	1.46
Non-Hispanic white <sup>6</sup>	2,211,960	2,267,817	32.8	32.4	10.92	11.14	1.58	1.60	7.19	7.22	1.16	1.18
Non-Hispanic black <sup>6</sup>	609,552	623,029	35.4	34.5	17.47	17.54	3.87	3.84	13.61	13.71	3.06	3.01
American Indian or Alaska Native total <sup>6,7</sup>	48,660	49,537	28.5	27.9	13.45	13.60	2.13	2.15	7.27	7.40	1.31	1.28
Asian or Pacific Islander total <sup>6,7</sup>	250,935	253,185	33.1	32.5	10.84	10.71	1.48	1.51	8.26	8.18	1.13	1.16
Hispanic <sup>8</sup>	999,632	1,041,239	31.6	31.0	11.97	12.10	1.77	1.80	6.94	6.96	1.19	1.20

<sup>1</sup> Born prior to 37 completed weeks of gestation.

<sup>2</sup> Born prior to 32 completed weeks of gestation.

<sup>3</sup> Birthweight of less than 2,500 grams (5 lb 8 oz).

<sup>4</sup> Birthweight of less than 1,500 grams (3 lb 4 oz).

<sup>5</sup> Includes origin not stated.

<sup>6</sup> Race and Hispanic origin are reported separately on birth certificates. Persons of Hispanic origin may be of any race. Race categories are consistent with the 1977 Office of Management and Budget (OMB) standards. In 2009, thirty-two states and the District of Columbia reported multiple-race data. The multiple-race data for these states were bridged to the single-race categories of the 1977 OMB standards for comparability with other states; see "Technical Notes." Multiple-race reporting areas vary for 2007-2008; see "Technical Notes."

<sup>7</sup> Data for persons of Hispanic origin are included for this race group; see "Technical Notes."

<sup>8</sup> Includes all persons of Hispanic origin of any race; see "Technical Notes."

NOTE: For information on the relative standard errors of the data and further discussion, see reference 9.

**Table 9. Preterm births: United States, final 1990, 2000, 2005-2008 and preliminary 2009**

[Data for 2009 are based on continuous files of records received from the states]

Year	Total preterm <sup>1</sup>	Late preterm <sup>2</sup>	Early preterm <sup>3</sup>		
			Total	32-33 weeks	Less than 32 weeks
Percentage					
2009	12.18	8.66	3.51	1.55	1.97
2008	12.33	8.77	3.56	1.57	1.99
2007	12.68	9.04	3.64	1.60	2.04
2006	12.80	9.14	3.66	1.62	2.04
2005	12.73	9.09	3.63	1.60	2.03
2000	11.64	8.22	3.42	1.49	1.93
1990	10.61	7.30	3.32	1.40	1.92

<sup>1</sup> Born prior to 37 completed weeks of gestation.

<sup>2</sup> Born at 34-36 completed weeks of gestation.

<sup>3</sup> Born prior to 34 completed weeks of gestation.

NOTE: For information on the relative standard errors of the data and further discussion, see reference 9.

**Table 10. Total count of records and completeness of preliminary file of live births: United States, each State and territory, preliminary 2009**

[By place of occurrence]

Area	Live births	
	Counts of records	Percent completeness
United States <sup>1</sup>	4,188,375	99.95%
Alabama	61,317	100.00%
Alaska	11,203	100.00%
Arizona	93,341	100.00%
Arkansas	38,815	100.00%
California	527,850	100.00%
Colorado	69,036	100.00%
Connecticut	39,483	100.00%
Delaware	11,993	100.00%
District of Columbia	14,203	100.00%
Florida	221,635	100.00%
Georgia	142,680	100.00%
Hawaii	18,888	100.00%
Idaho	23,254	100.00%
Illinois	167,754	100.00%
Indiana	87,548	100.00%
Iowa	39,640	100.00%
Kansas	42,512	100.00%
Kentucky	55,594	100.00%
Louisiana	65,124	100.00%
Maine	13,354	100.00%
Maryland	72,593	100.00%
Massachusetts	75,537	100.00%
Michigan	116,237	100.00%
Minnesota	70,428	100.00%
Mississippi	41,983	100.00%
Missouri	79,611	100.00%
Montana	12,209	100.00%
Nebraska	27,199	100.00%
Nevada	37,226	99.80%
New Hampshire	13,389	100.00%
New Jersey	107,085	100.00%
New Mexico	28,317	100.00%
New York	250,026	100.00%
New York excluding New York City	123,252	100.00%
New York City	126,774	100.00%
North Carolina	128,179	100.00%
North Dakota	10,275	100.00%
Ohio	145,560	100.00%
Oklahoma	53,622	99.91%
Oregon	47,684	100.00%
Pennsylvania	145,793	100.00%
Rhode Island	12,231	100.00%
South Carolina	57,883	99.99%
South Dakota	12,480	100.00%
Tennessee	87,141	100.00%
Texas	408,429	100.00%
Utah	55,144	100.00%
Vermont	5,776	100.00%
Virginia	103,062	100.00%
Washington	89,200	100.00%
West Virginia	21,300	100.00%
Wisconsin	70,090	100.00%
Wyoming	7,238	100.00%
Puerto Rico	44,772	99.87%
Virgin Islands	---	---
Guam	3,419	99.91%
American Samoa	1,340	100.00%
Northern Marianas	1,110	100.00%

<sup>1</sup> Excludes data for Puerto Rico, Virgin Islands, Guam, American Samoa, and Northern Marianas.

NOTE: Percent completeness =  $\frac{\text{Number of records in preliminary file} * 100}{\text{Count of records}}$