



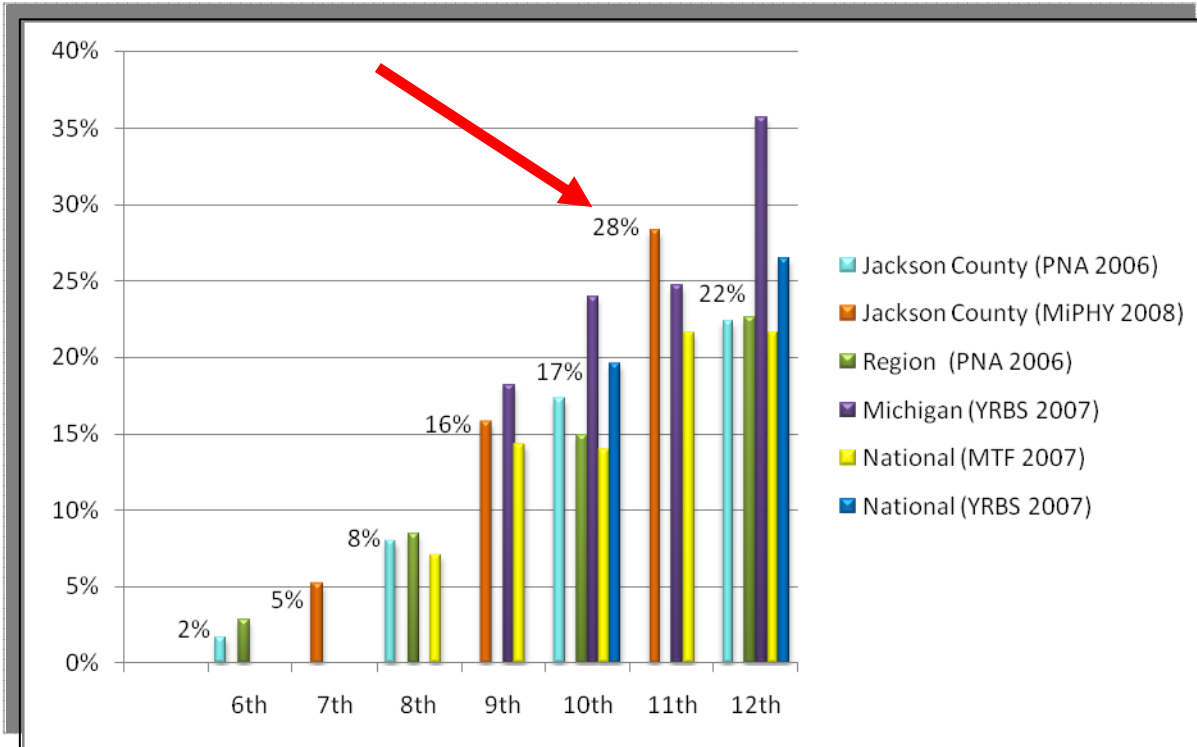
Tobacco Priority Area

A tobacco-related statistical report for Jackson County, Michigan.

YOUTH - USE

Youth (self-report) who have used TOBACCO at least once in the PAST MONTH

2006 Prevention Needs Assessment (County and Regional), 2008 Michigan Profile for Healthy Youth (County), 2007 Youth Risk Behavior Survey (Michigan & National), 2007 Monitoring the Future (National)



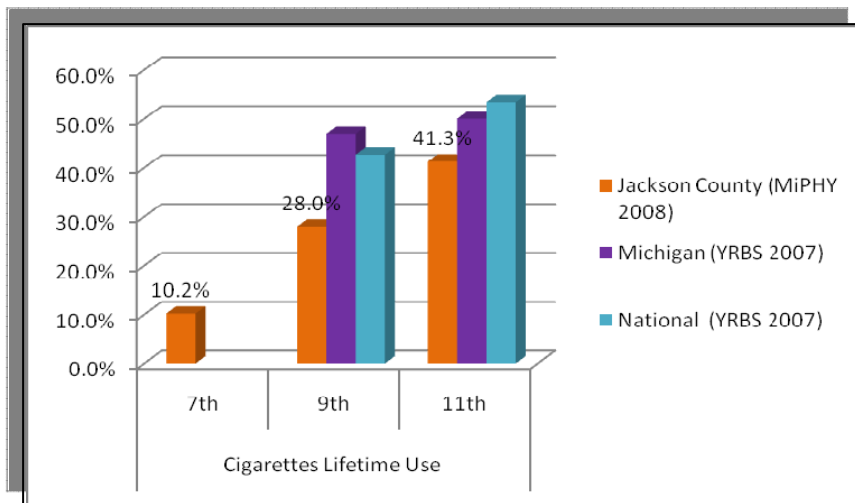
Substance	Grade	Jackson County (MiPHY 2008)	Michigan (YRBS 2007)	National (YRBS 2007)
Tobacco 30-day use	7 th	5.2%	---	---
	9 th	15.8%	18.2%	14.3%
	11 th	28.3%	24.7%	21.6%

Substance	Grade	Jackson County (PNA 2006)	Mid-South Region (PNA 2006)	Michigan (YRBS 2007)	National (MTF 2007)	National (YRBS 2007)
Tobacco 30-day use	6 th	1.7%	2.8%	---		---
	8 th	8.0%	8.4%	---	7.1%	---
	10 th	17.3%	14.9%	24%	14.0%	19.6%
	12 th	22.4%	22.6%	35.7%	21.6%	26.5%



Youth (self-report) who have ever smoked a **CIGARETTE** in their **LIFETIME**

2008 Michigan Profile for Healthy Youth (County) and 2007 Youth Risk Behavior Survey (Michigan & National)

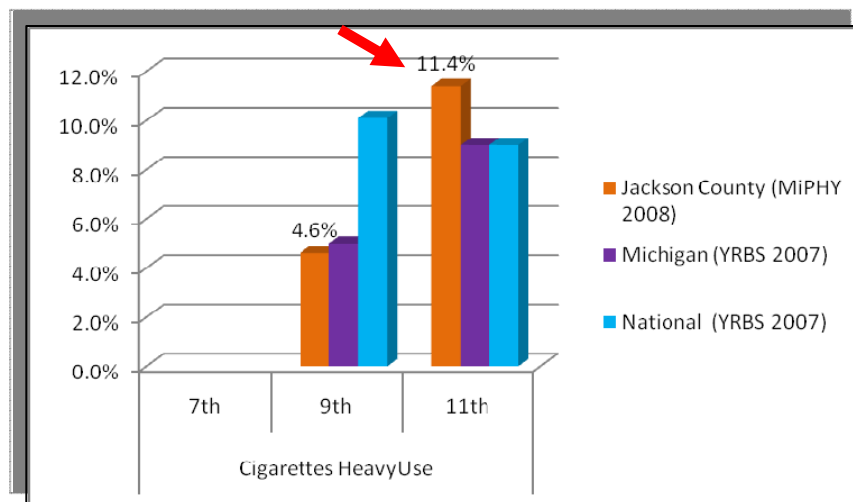


14% of Jackson County high school youth smoked a whole cigarette before the age of 13.

Youth (self-report) who have smoked **CIGARETTES** on 20+ time in the past 30 days = **HEAVY USE**

2008 Michigan Profile for Healthy Youth (County) and 2007 Youth Risk Behavior Survey (Michigan & National)

50% of Jackson County high school youth who are current smokers have tried to quit compared to 58% of Michigan high school youth.



ADULT - USE

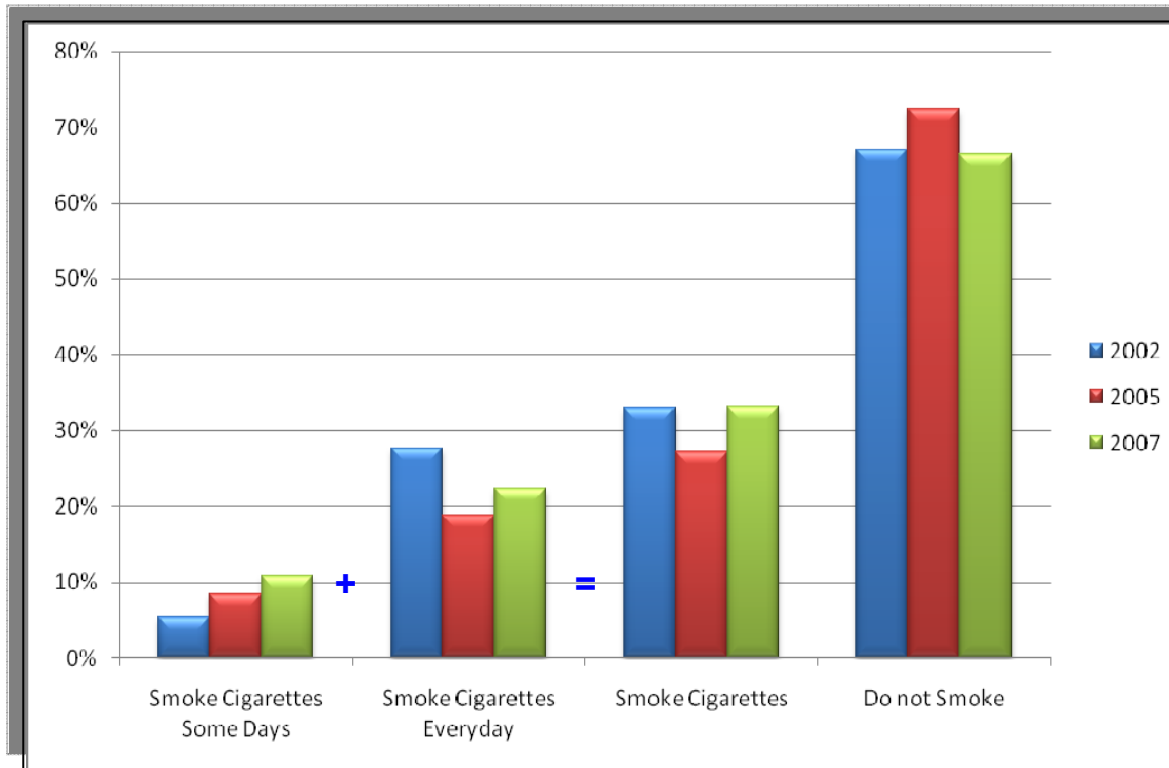
Adult Use and Attempts to Quit Smoking

Behavioral Risk Factors Survey (Michigan and U.S. data) and Jackson Community Report Card Survey (Jackson)

Measure	Location	2002	2003	2004	2005	2006	2007
Adults who are current smokers	Jackson	32.9%			27.2%		33.1%
	Michigan	24.2%	26.1%	23.3%	22.0%	22.4%	
	U.S.	23.3%	22.0%	20.9%	20.6%	20.1%	
Adults who tried to quit smoking one day or longer in past year	Michigan			61.6%	61.5%		

Adult Use

2007 Jackson Community Report Card Survey



Jackson County Community Health Survey shows that as of 2005 27% of Jackson County residents are smokers compared to Michigan's average of 22%.

42% of Jackson County respondent's age 18-35 stated they are smokers. (Community Health Assessment for Jackson County 2008)

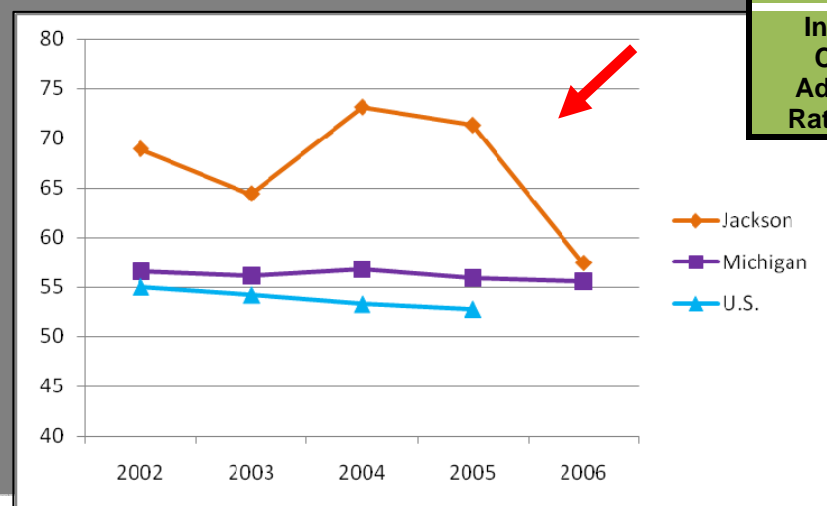
Substance	Type	2002	2005	2007
Jackson County Tobacco Adult Use	Smoke Cigarettes Some Days	5.3%	8.4%	10.8%
	Smoke Cigarettes Everyday	27.6%	18.8%	22.3%
	Total Smokers	32.9%	27.2%	33.1%
	Non-Smokers	67.1%	72.4%	66.4%

CONSEQUENCE DATA

Consequence data is information or data that is collected to show the effects of something. In this case, the consequence data shows the negative effects of the use of tobacco on the human

Invasive Lung Cancer Rates

Michigan Department of Community Health



Measure	Location	2002	2003	2004	2005	2006
Invasive Lung Cancer Age-Adjusted Death Rate per 100,000	Jackson	68.9	64.4	73.1	71.3	57.4
	Michigan	56.6	56.1	56.8	55.9	55.6
	U.S.	55	54.2	53.3	52.8	---

Live Births to Mother's Who Smoked While Pregnant

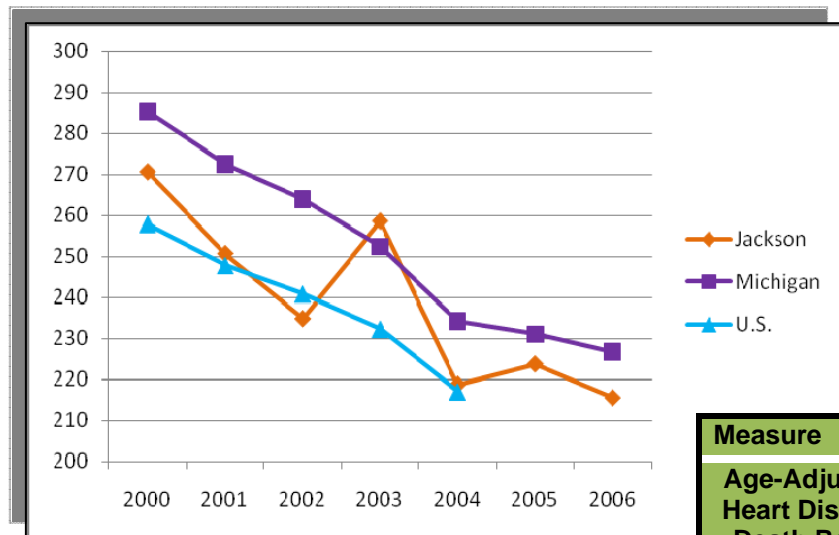
Michigan Department of Community Health



MDCH	Location	2006
Percent of Live Births with Mothers Who Smoked Tobacco While Pregnant	Jackson	21.5 %
	Michigan	13.8 %

Age-Adjusted Heart Disease Death Rates

Michigan Department of Community Health

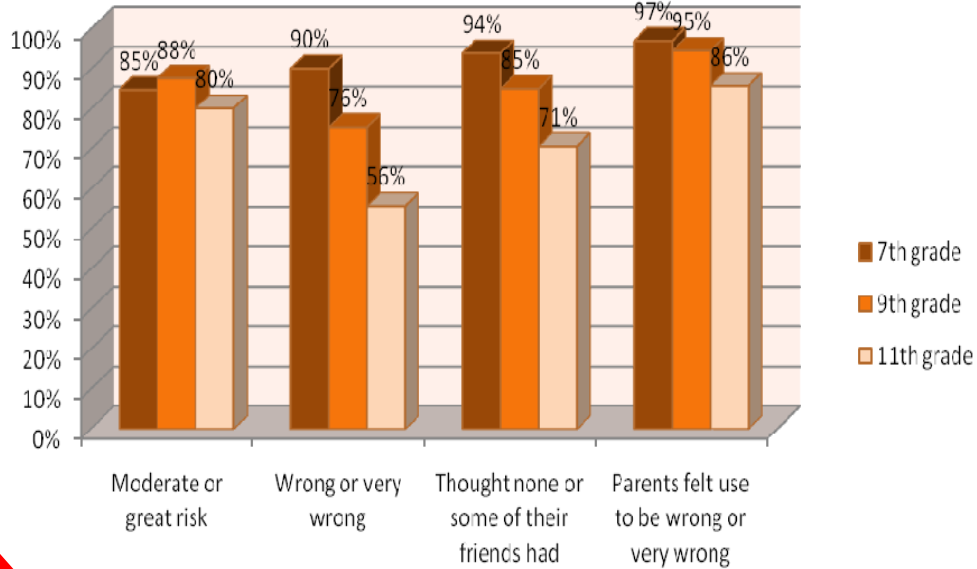


Measure	Location	2000	2001	2002	2003	2004	2005	2006
Age-Adjusted Heart Disease Death Rates	Jackson	270.7	250.8	234.9	258.7	218.8	223.8	215.6
	Michigan	285.3	272.5	263.9	252.4	234.2	231.1	226.7
	U.S.	257.9	247.8	240.8	232.3	217.0	---	---

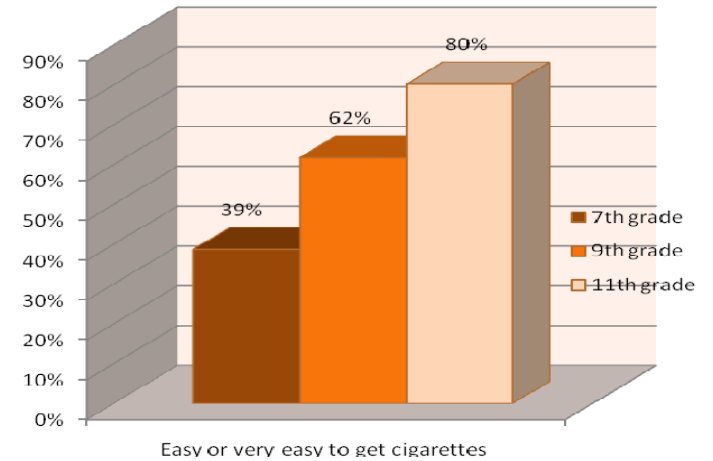
YOUTH – PERCEPTION

Youth Perceptions of Cigarettes

2008 Michigan Profiles for Healthy Youth (Jackson)



For these topics, the positive direction would be the numbers increasing not decreasing.



For this topic, the positive direction would be the numbers decreasing or remaining constant.

Measure	Location	7 th grade	9 th grade	11 th grade
% of students who reported regular cigarette use to be a moderate or great risk	Jackson	84.8%	87.7%	80.2%
% of students who reported cigarette use by peers to be wrong or very wrong	Jackson	90.2%	75.6%	55.8%
% of students who reported they thought none or some of their friends had smoked recently	Jackson	94%	85.1%	70.7%
% of students who reported their parents felt cigarette use to be wrong or very wrong	Jackson	97.1%	94.6%	85.8%
% of students who reported it was easy or very easy to get cigarettes	Jackson	38.7%	61.7%	80.2%

SMOKEFREE



NO SMOKING

**IT IS AGAINST THE
LAW TO SMOKE IN
THESE PREMISES**

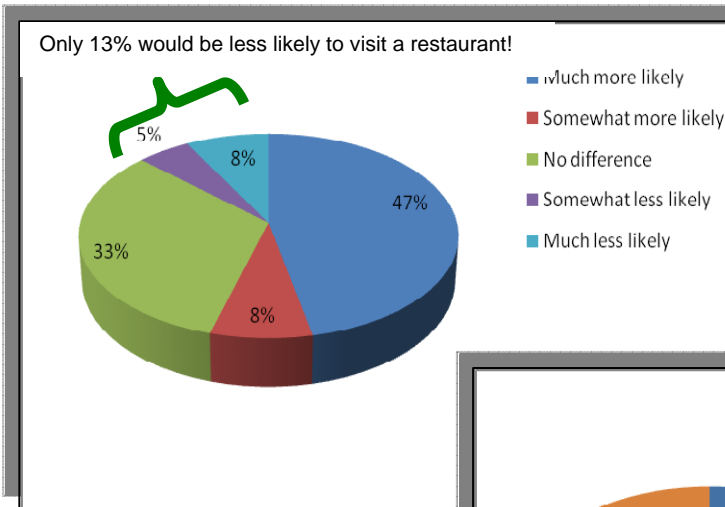
	<u>Jackson</u>	<u>Michigan</u>
Government workplaces.....	Restricted.....	Restricted
Private Workplaces	Individual basis/no law	No provision
Schools.....	Bans-Individual policies	Bans
Childcare Facilities	Bans.....	Bans
Restaurants	Individual basis/no law	Bans
Bars.....	Individual basis/no law	No provision

- Currently, there are multiple bills in the Michigan Legislature for smokefree air (4-23-09)
- There are 313 licensed restaurants in Jackson and of which 191 are completely smoke-free. (1-1-08)

Measure		Jackson County
Do you think smoking should be allowed in restaurants?	Allowed all areas	4.7 %
	Allowed some areas	43.6 %
	Not allowed at all	51.7 %
Do you think smoking should be allowed in bars and cocktail lounges?	Allowed all areas	23.6 %
	Allowed some areas	53.9 %
	Not allowed at all	22.5 %
If a restaurant became entirely smoke free would you be more or less likely to go to that restaurant?	Much more likely	46.7 %
	Somewhat more likely	7.7 %
	No difference	32.5 %
	Somewhat less likely	5.1 %
	Much less likely	8.0 %
If a bar or cocktail lounge became entirely smoke free would you be more or less likely to go to there?	Much more likely	16.4 %
	Somewhat more likely	6.9 %
	No difference	21.3 %
	Somewhat less likely	4.4 %
	Much less likely	13.9 %
	Don't go to bars/ cocktail lounges	37.1 %

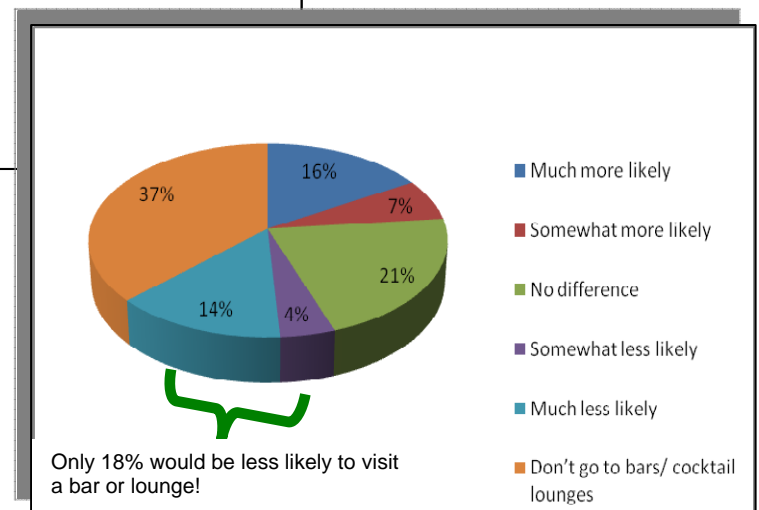
If restaurants became smoke free would you be more or less likely to visit them?

2008 Jackson County Community Health Assessment



If bars and cocktail lounges became smoke free would you be more or less likely to visit them?

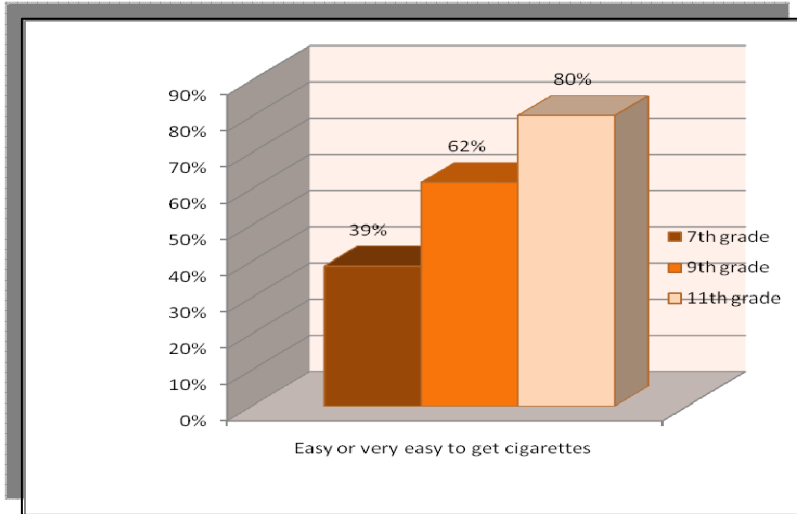
2008 Jackson County Community Health Assessment



YOUTH - ACCESS/AVAILABILITY

Access to Cigarettes

2008 Michigan Profiles for Healthy Youth (Jackson)



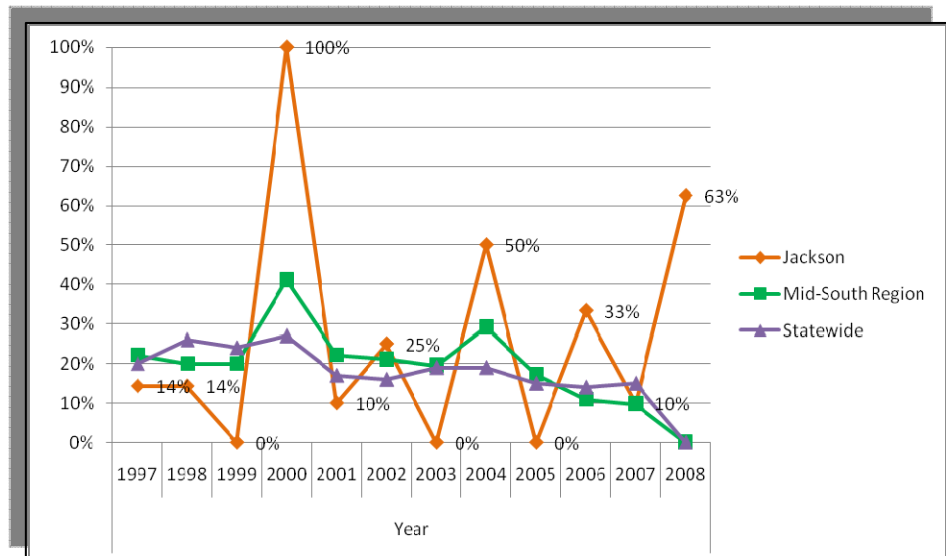
Measure	Location	7 th grade	9 th grade	11 th grade
% of students who reported it was easy or very easy to get cigarettes	Jackson	38.7%	61.7%	80.2%

Sales to Minors - Synar Rate*

Synar Civilian Tobacco Compliance Checks

County	Year												12 Year Averages
	1997	1998	1999	2000	2001	2002	2003	2004	2005	2006	2007	2008	
Jackson	14.3%	14.3%	0.0%	100.0%	10.0%	25.0%	0.0%	50.0%	0.0%	33.3%	10.0%	62.5%	26.6%
Mid-South Region	22.2%	20.0%	20.0%	41.2%	22.2%	21.1%	19.6%	29.2%	17.3%	10.9%	9.8%	---	21.2%
Statewide	20.0%	26.0%	24.0%	27.0%	17.0%	16.0%	19.0%	19.0%	15.0%	14.0%	15.0%	---	19.3%

By best estimates in 2009, there were 165 tobacco vendors in Jackson County.



*Synar checks are tied to Michigan's and Jackson access to federal block grant dollars for substance abuse prevention and treatment. If Michigan's rate is over 20% for a given period of time, then there is a loss of federal dollars for Michigan, and ultimately Jackson County.

YOUTH – PROBLEM BEHAVIORS

In the 2008 Michigan Profiles for Healthy Youth, the Coalition identified the following problem behaviors of concern:

- Being in a physical fight
- Injuries in a physical fight
- Carried a weapon (gun, knife, or club)
- Had sexual intercourse
- Binge drank



In the 2006 Prevention Needs Assessment, the Coalition identified the following problem behaviors of concern:

- Attack to harm
- Suspended from school
- Been arrested
- *Drunk or high at school*