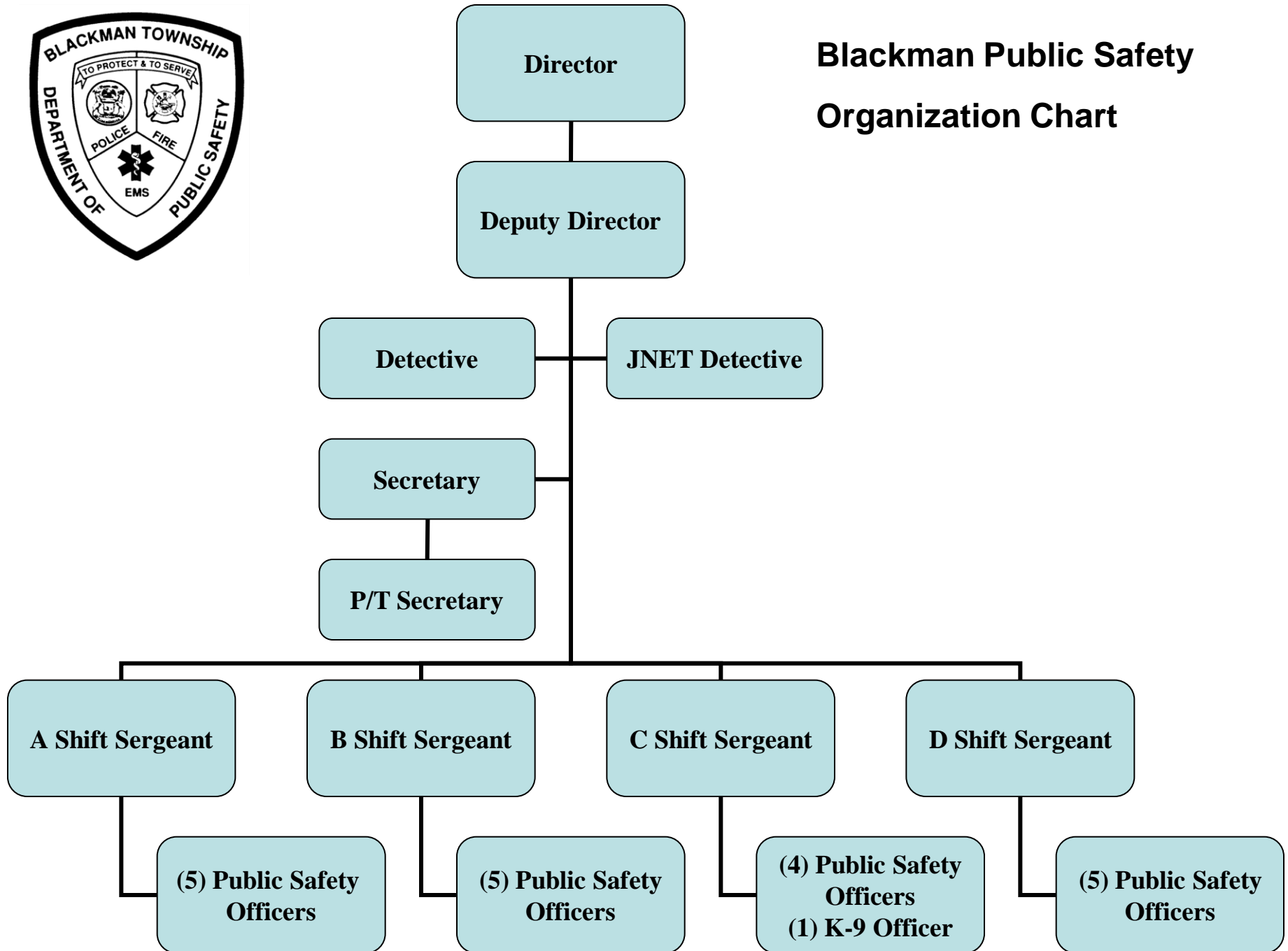




Year-End Report 2008



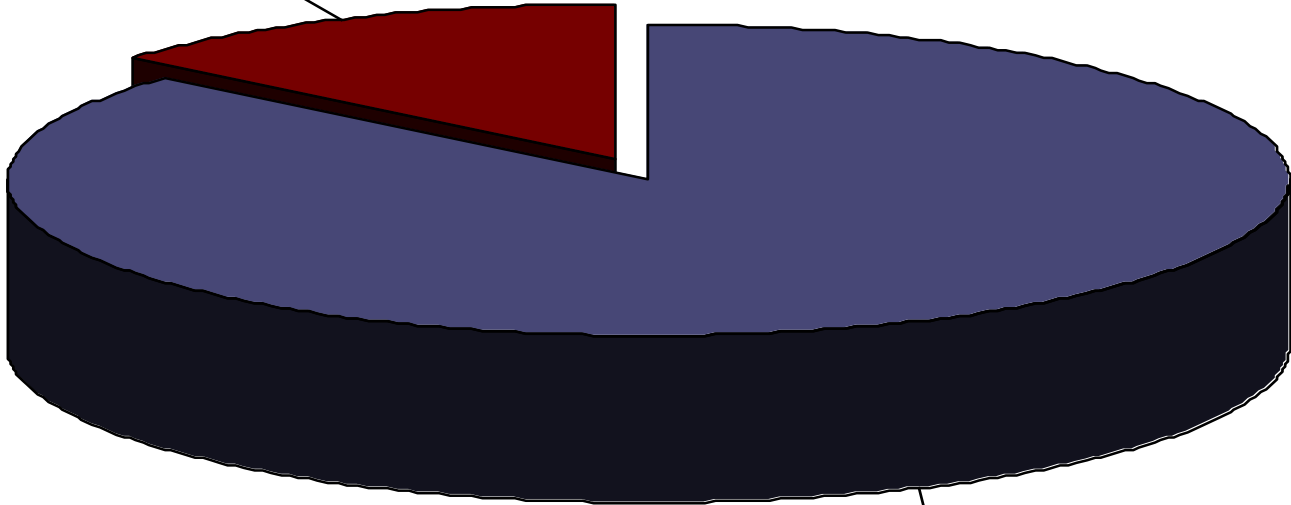
Blackman Public Safety Organization Chart





Calls for Service 2008

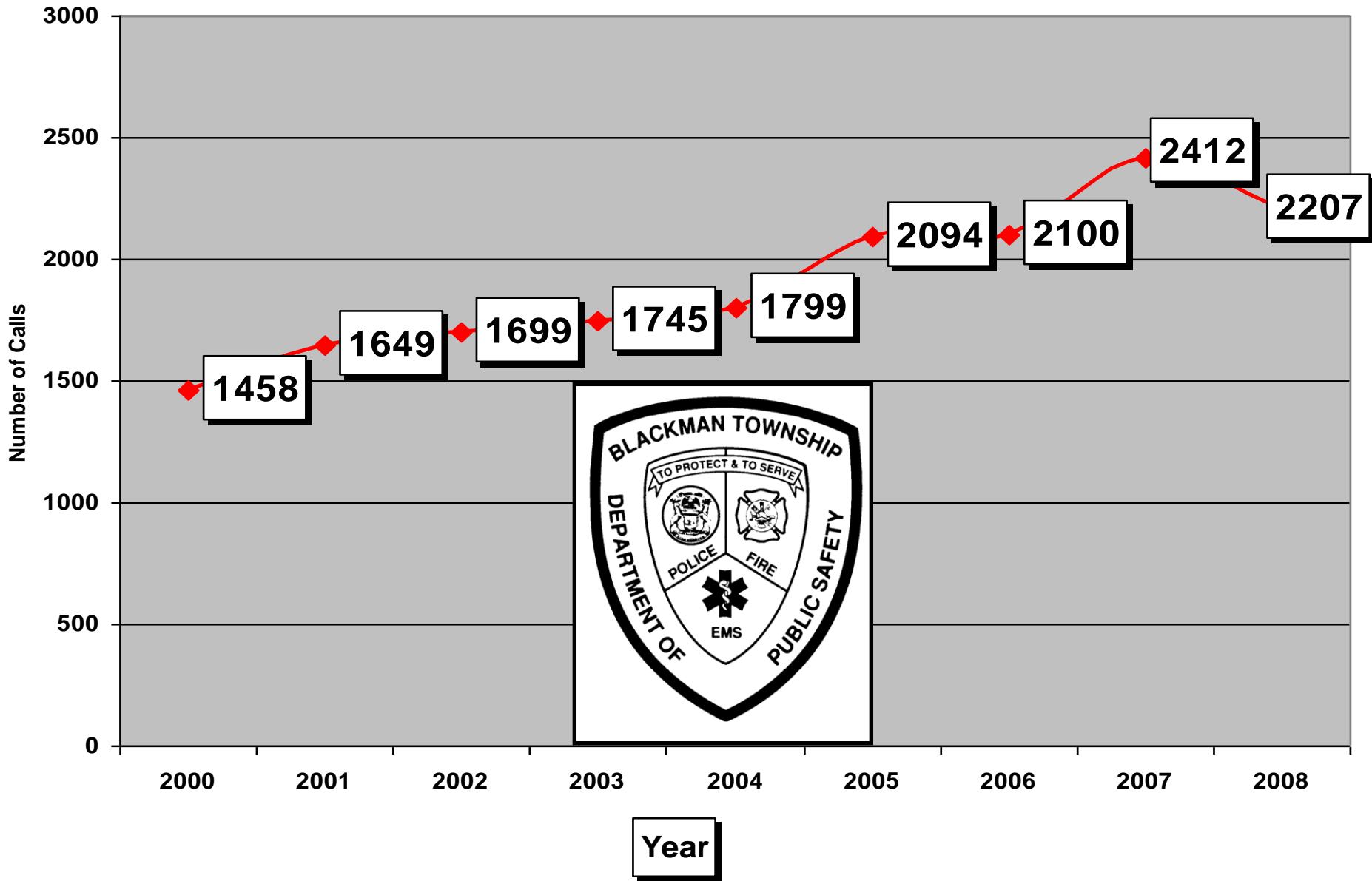
2,207
13.6%



■ Police ■ Fire

14,020
86.4%

Fire Calls Last Nine Years





BTPS: Fire Calls

- **8.4 % Decrease from Last Year**
- **33.9 % Increase over Last Nine Years**

Fire Prevention Efforts



Education:

The department provides fire safety training to elementary and preschool-aged children, senior citizen complexes, as well as to other businesses upon request



Enforcement:

The department conducts fire inspections at the more than 500 township business and commercial occupancies



Inter-agency cooperation through Automatic Mutual Aid Agreement

Inter-Agency Cooperation

- **Automatic Mutual Aid Response**
 - **City** 91 structure fires, 31 required M/A
 - **Summit** 28 structure fires, 12 required M/A
 - **Blackman** 26 structure fires, 13 required M/A
 - **Leoni** 25 structure fires, 9 required M/A

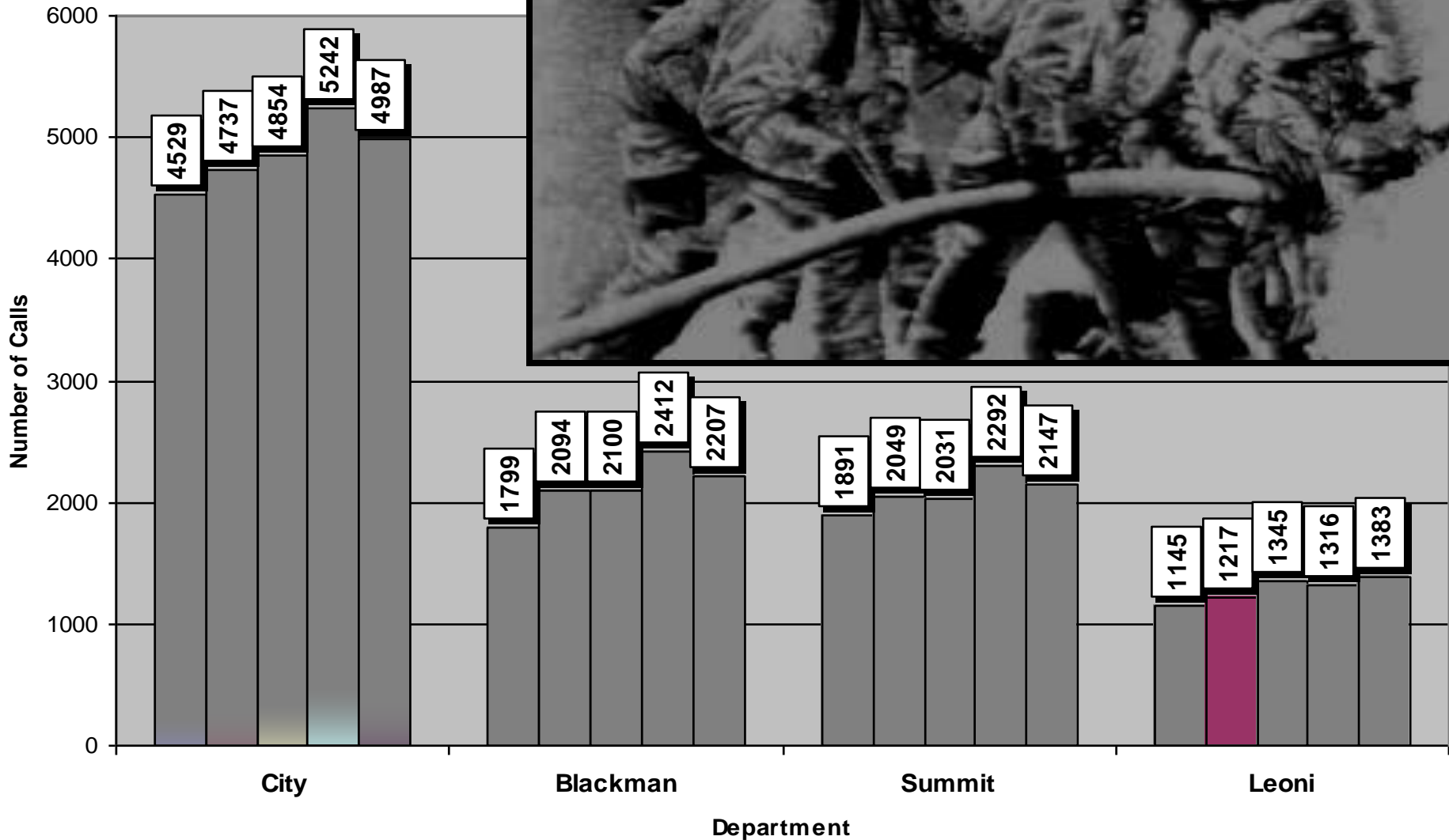
(170 structure fires) (65 M/A required)

 - Blackman provided 184 man hours
 - Blackman received 144 man hours

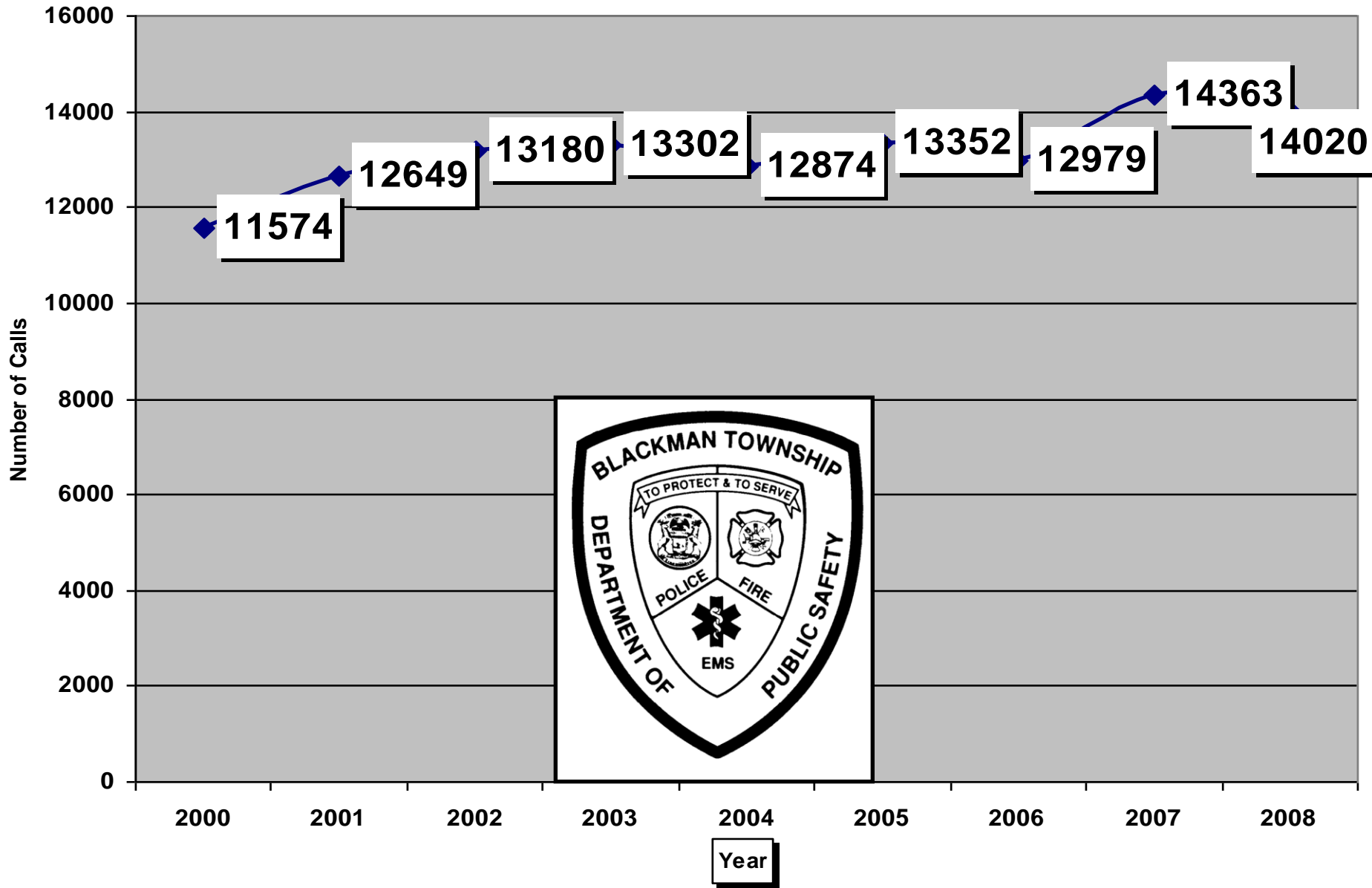
Inter-Agency Cooperation

- **Local Emergency Planning Committee**
- **Grant Writing on Behalf of the Jackson County Fire Chief's Association**
- **Partnership with Faith-Based Organizations**
 - **The Todd A. Nosal Smoke Detector In Every Home Initiative**

Jackson County Fire Calls Last Five Years



Police Calls Last Nine Years





BTPS: Police Calls

- **2.3 % Decrease from Last Year**
- **17.4 % Increase over Last Nine Years**

FBI Uniform Crime Report

Blackman Charter Township

| Violent Crime | | Property Crime | |
|---------------|----|----------------|-----|
| 2007 | 65 | | 633 |
| 2006 | 51 | | 578 |
| 2005 | 67 | | 447 |
| 2004 | 70 | | 420 |
| | | | |
| Murder | | Burglary | |
| Rape | | Larceny | |
| Robbery | | UDAA | |
| Agg. Assault | | Arson | |

Blackman Charter Township

UCR Data – Violent Crime

| | Violent Crime | Murder & Manslaughter | Forcible Rape | Robbery | Aggravated Assault |
|------|----------------------|-----------------------|---------------|---------|--------------------|
| 2007 | 65 | 1 | 11 | 11 | 42 |
| 2006 | 51 | 2 | 8 | 9 | 34 |
| 2005 | 67 | 2 | 15 | 14 | 36 |
| 2004 | 70 | 0 | 16 | 5 | 49 |

Blackman Charter Township

UCR Data – Property Crime

| | Property Crime | Burglary | Larceny-Theft | Motor Vehicle Theft | Arson |
|------|-----------------------|----------|---------------|---------------------|-------|
| 2007 | 633 | 85 | 520 | 28 | 5 |
| 2006 | 578 | 96 | 455 | 27 | 4 |
| 2005 | 447 | 72 | 338 | 37 | 4 |
| 2004 | 420 | 48 | 344 | 28 | 2 |

Crime Prevention Efforts



This department had 125 drug cases and 185 OWI arrests last year



This department executed 30 search warrants and completed 27 separate forfeitures



Many of these self-initiated activities were led by the department's detective and K-9 officer positions

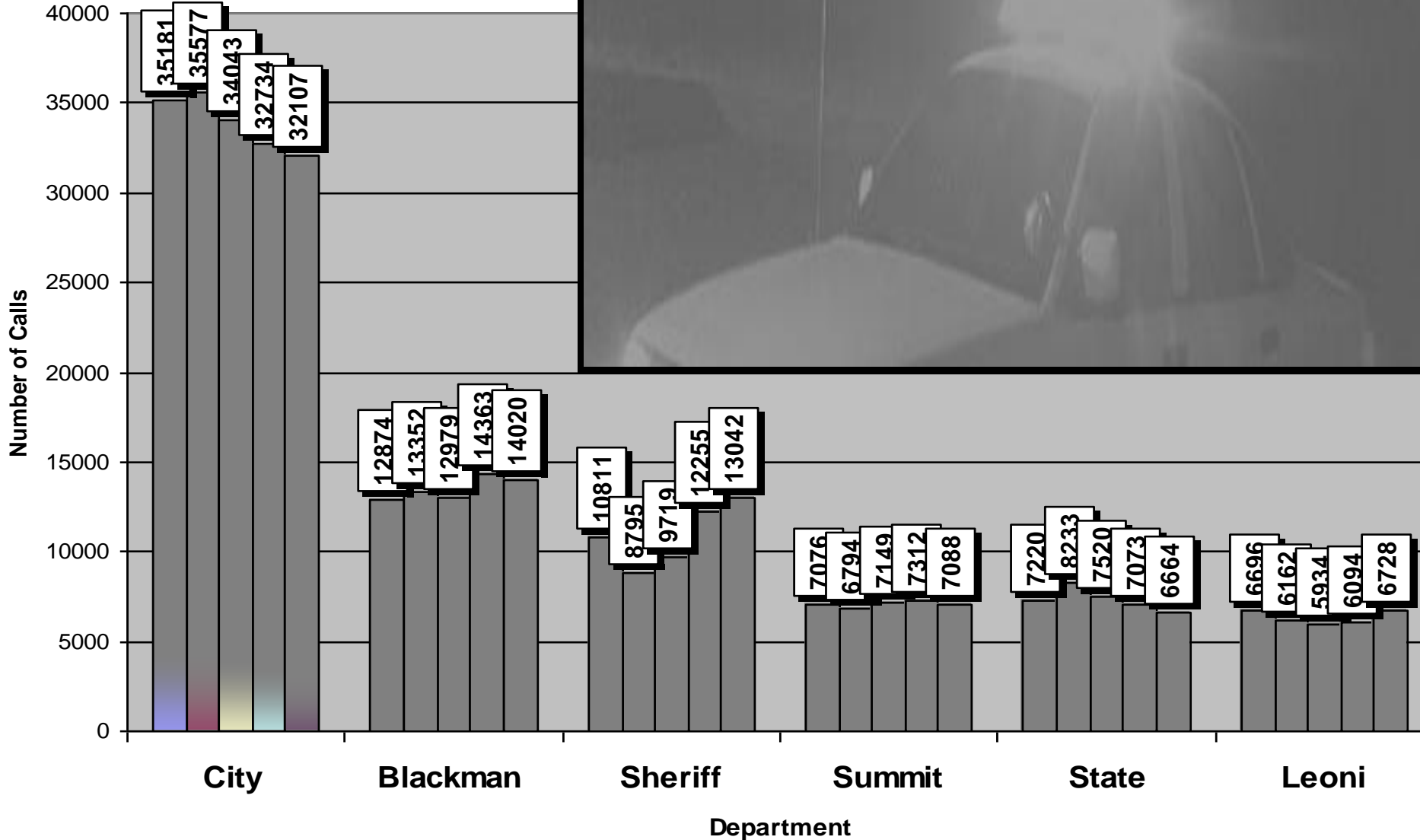


Inter-agency cooperation with the Major Crimes Task Force and participation with JNET

Percentage of Police Calls

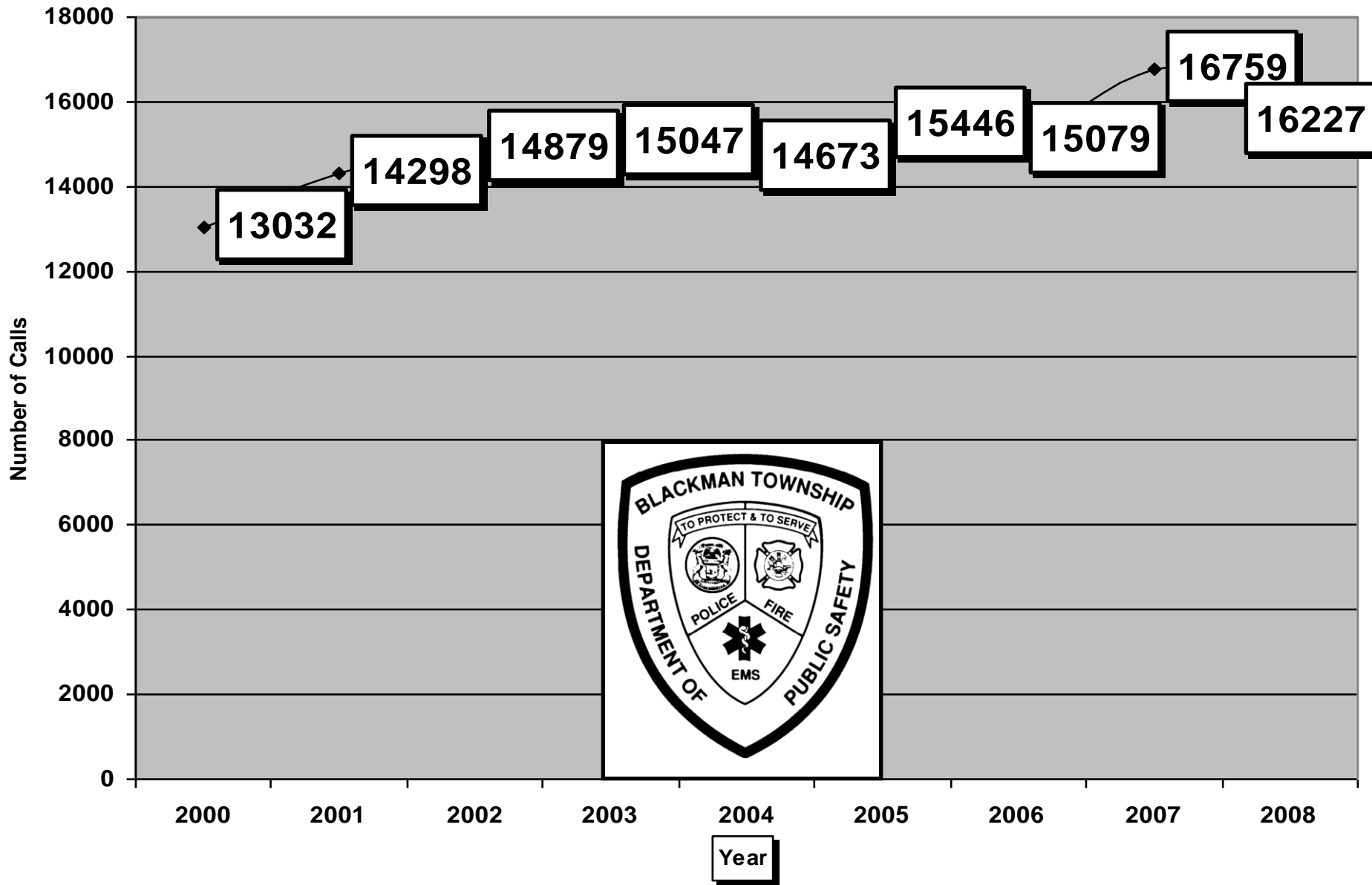
- Blackman Public Safety handled **94.1%** of all police calls and **100%** of all fire/rescue calls in Blackman Township
- Jackson County Sheriff handled **3.3%** and the Michigan State Police **2.6%** of Blackman Township police calls

Jackson County Police Calls Last Five Years



FY 2004
 FY 2005
 FY 2006
 FY 2007
 FY 2008

All Calls Last Nine Years

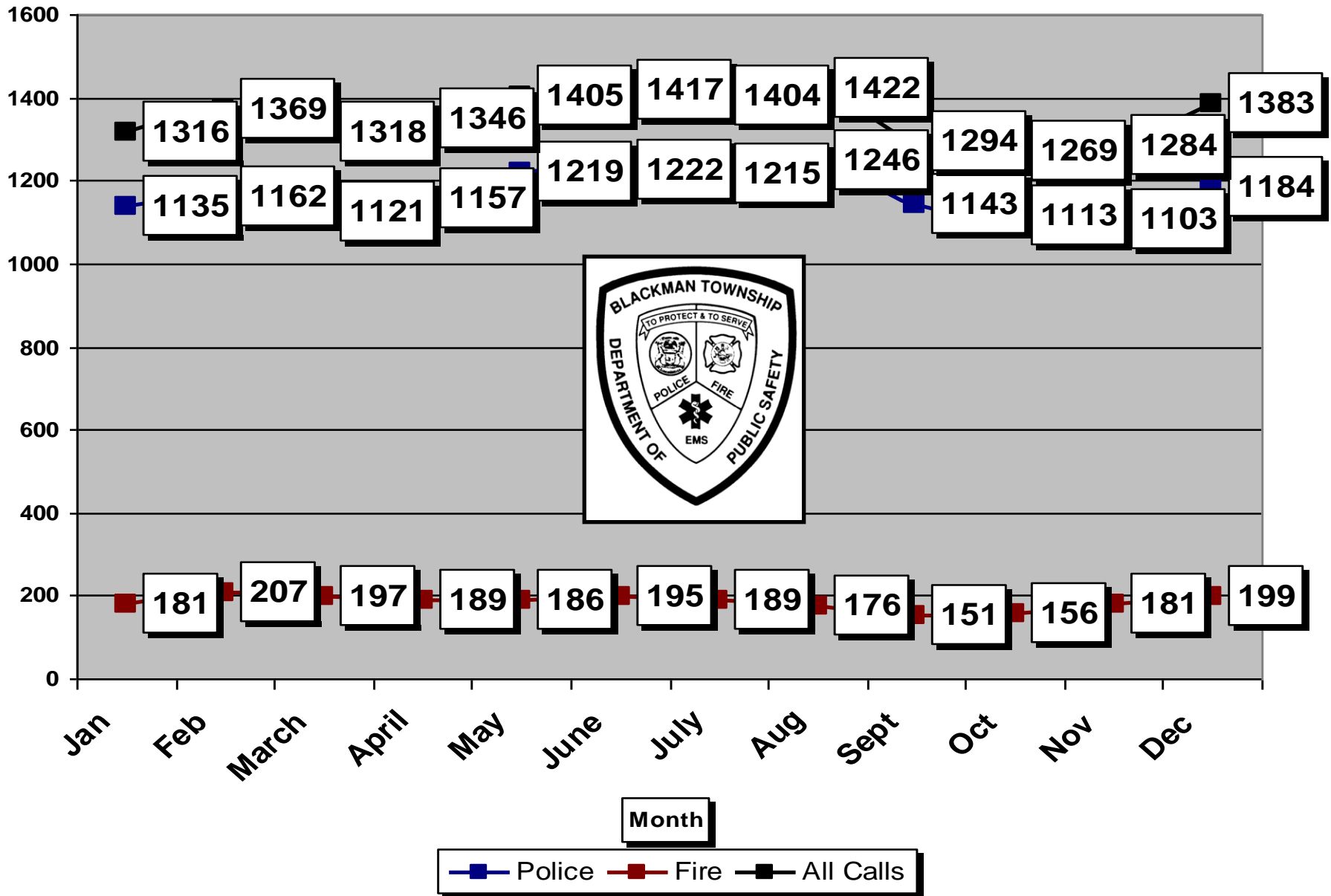




BTPS: All Calls

- **3.1 % decrease from last year**
- **19.6 % increase over last nine years**

Calls for Service by Month 2008 (Itemized)

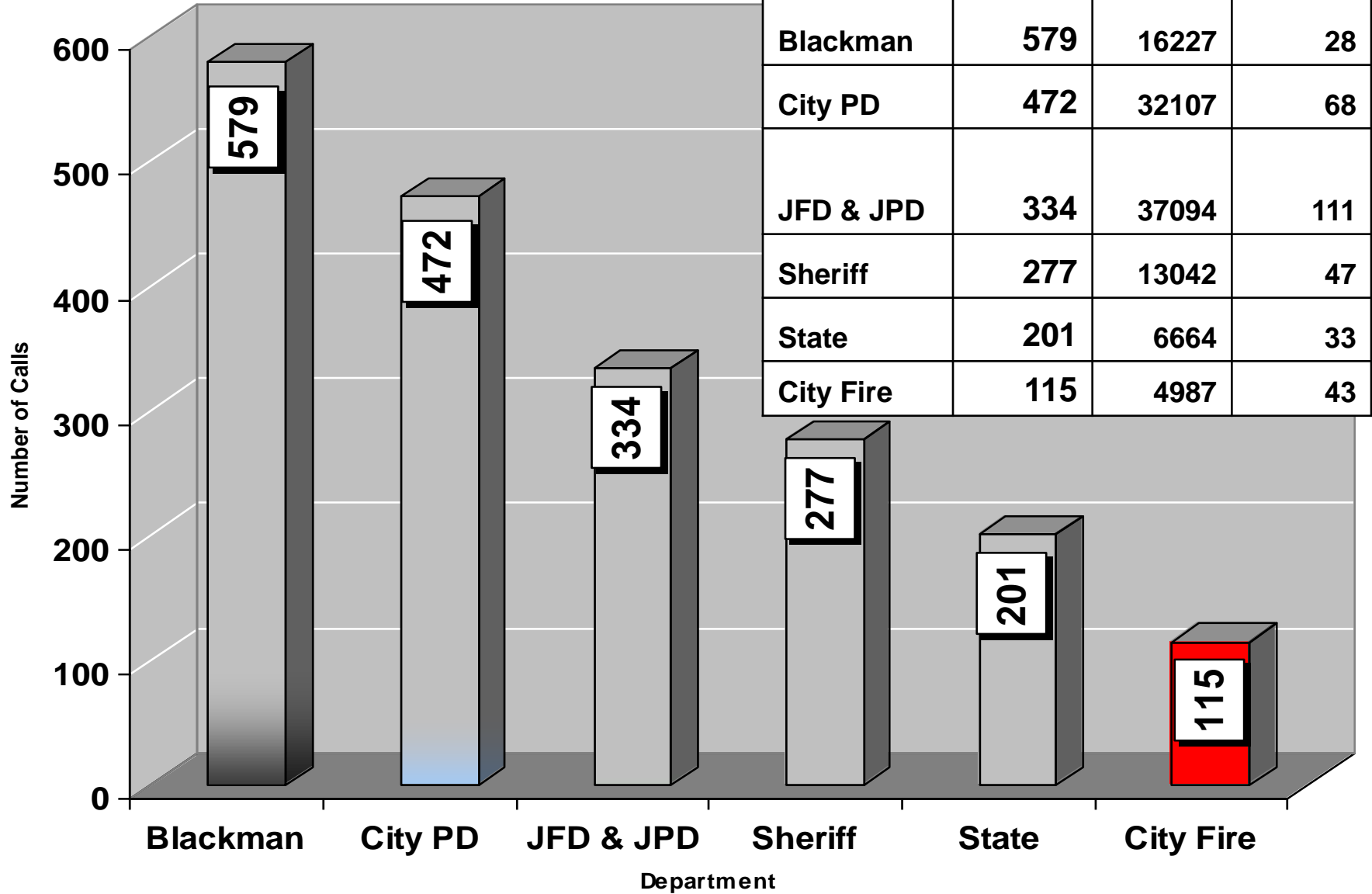


Grant-Funded Coverage

- Blackman Public Safety performed over 1,000 hours of extra coverage focusing on drunk driving and seat belt enforcement with **\$41,000** worth of federal **traffic grants**
- Blackman Public Safety received **\$32,000** in federal funding from a **personnel grant** with Homeland Security

Jackson County

Calls to Officer Ratio 2008



| | <i>Ratio</i> | <i>Calls</i> | <i>Officers</i> |
|-----------|--------------|--------------|-----------------|
| Blackman | 579 | 16227 | 28 |
| City PD | 472 | 32107 | 68 |
| JFD & JPD | 334 | 37094 | 111 |
| Sheriff | 277 | 13042 | 47 |
| State | 201 | 6664 | 33 |
| City Fire | 115 | 4987 | 43 |



Year-End Report 2008